

Bear Creek Park - Site Plan

1237 Marion Road SE



Amenities

- A) Shelter & Restrooms
- B) Playground
- C) Horseshoes
- D) Baseball
- E) Volleyball
- F) Parking for 48 cars

Electrical

**DO NOT OVERLOAD
CIRCUITS!!!**

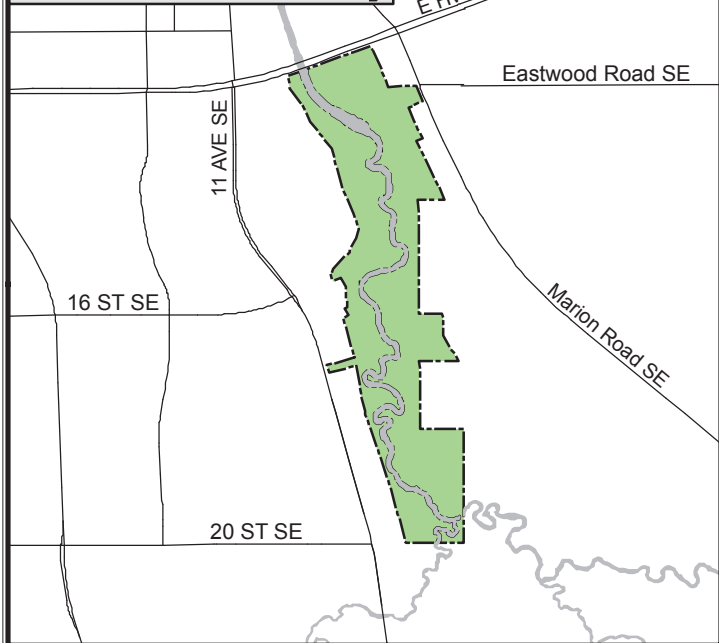
Figure out the amps required for each appliance with the following formula:

$$\text{Amps(A)} = \frac{\text{Watts(W or VA)}}{\text{Volts(V)}}$$

Sometimes the amps may be listed on the appliance. Add together the amps from individual appliances in such a way to stay below the maximum limit per circuit. To be safe, stay 3-4 amps below the maximum, meaning 16-17 amps for a 20 amp circuit.

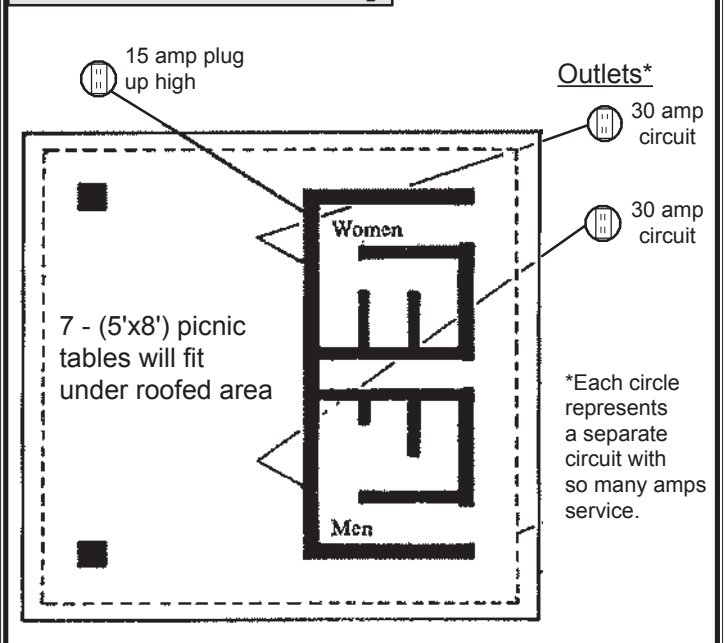
Area Map

Bear Creek Park - 1237 Marion Road SE



Shelter Plan

Bear Creek Park - 1237 Marion Road SE



Outlets*

- 30 amp circuit
- 30 amp circuit

*Each circle represents a separate circuit with so many amps service.