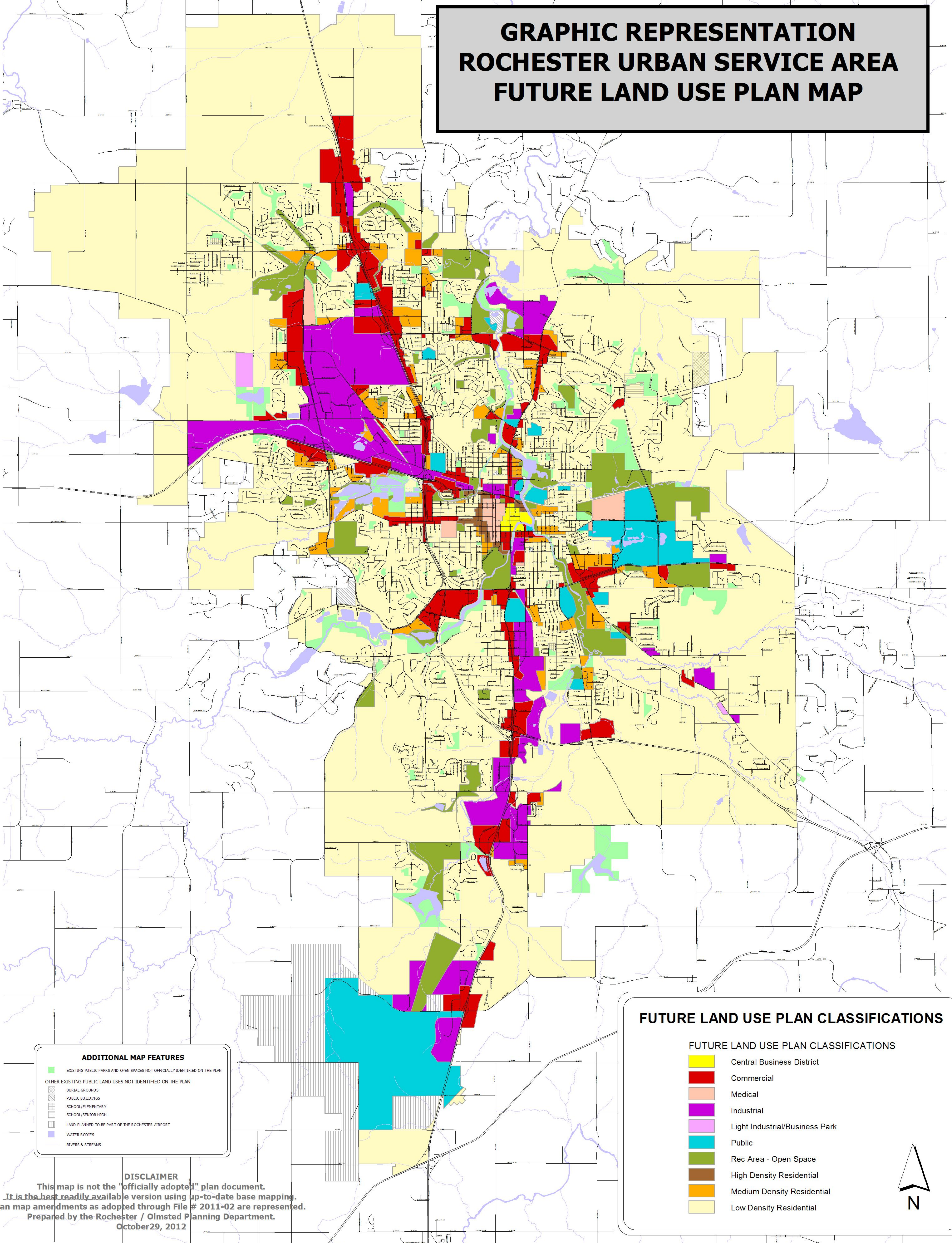


GRAPHIC REPRESENTATION ROCHESTER URBAN SERVICE AREA FUTURE LAND USE PLAN MAP



ADDITIONAL MAP FEATURES

- EXISTING PUBLIC PARKS AND OPEN SPACES NOT OFFICIALLY IDENTIFIED ON THE PLAN
- OTHER EXISTING PUBLIC LAND USES NOT IDENTIFIED ON THE PLAN
- BURIAL GROUNDS
- PUBLIC BUILDINGS
- SCHOOL/ELEMENTARY
- SCHOOL/SENIOR HIGH
- LAND PLANNED TO BE PART OF THE ROCHESTER AIRPORT
- WATER BODIES
- RIVERS & STREAMS

FUTURE LAND USE PLAN CLASSIFICATIONS

	Central Business District
	Commercial
	Medical
	Industrial
	Light Industrial/Business Park
	Public
	Rec Area - Open Space
	High Density Residential
	Medium Density Residential
	Low Density Residential

DISCLAIMER
This map is not the "officially adopted" plan document.
It is the best readily available version using up-to-date base mapping.
Plan map amendments as adopted through File # 2011-02 are represented.
Prepared by the Rochester / Olmsted Planning Department.
October 29, 2012

