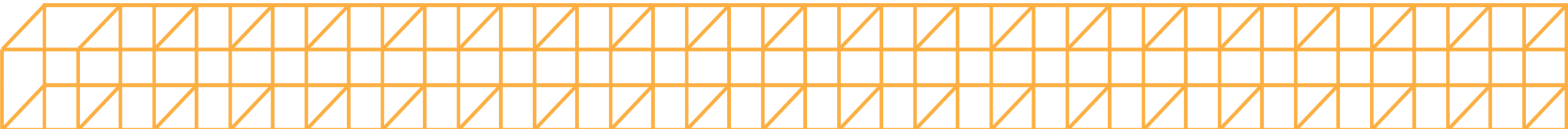


Prospect Utility Plant Expansion

08/27/24





Overview



- Introductions
- About our Project
- The Application Process
- Exhibits:
 - Site Plan
 - Landscape Plan
 - Building Elevation
 - Photometric Plan
- Traffic Impacts
- Q&A

Introductions



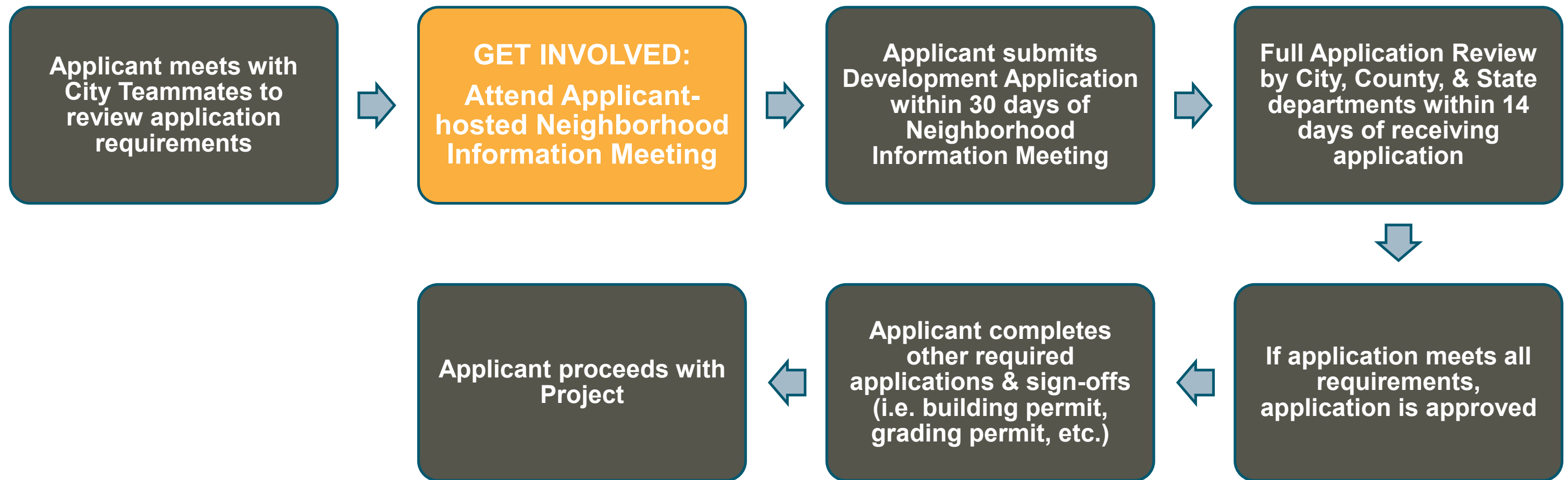
- Mayo Clinic
 - Jack Rol
 - Brett Gorden
 - Ilaya Hopkins
 - Erin Sexton
- WSB
 - Brian Frank
 - Andy Masterpole
- Burns & McDonnell
 - Chris Bowman
 - Nicholas Rauth
 - Cole Luke
 - Laura Nies
 - Chris Fields

About Our Project

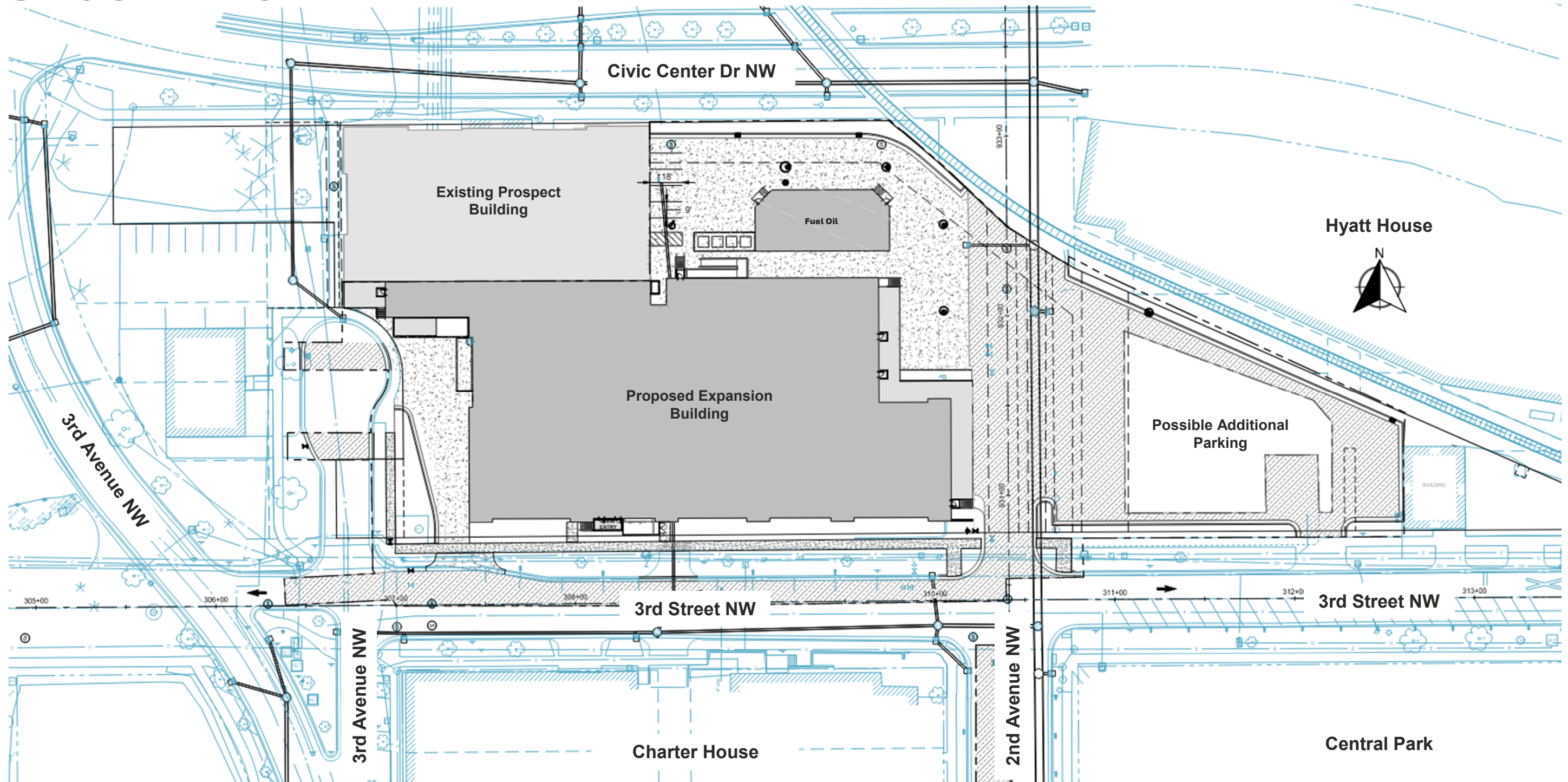


- The site is bounded by Civic Center Drive NW, 3rd Street NW, 3rd Avenue NW, 1st Avenue NW
- Zoning District: Mixed Use Downtown Fringe (MXD-FR)
- Overlay District: Medical Institutional Campus Special District
- Land Use: Utility, Minor (permitted)
- Included in the last three cycles of Mayo Clinic's 5-year plan, which is reviewed and endorsed by the City of Rochester
- Connected directly to the existing Prospect Utility Plant
- Necessary to meet long-term energy needs of Mayo Clinic
- Includes the capacity to supply chilled water, steam, and essential power to existing and future buildings.

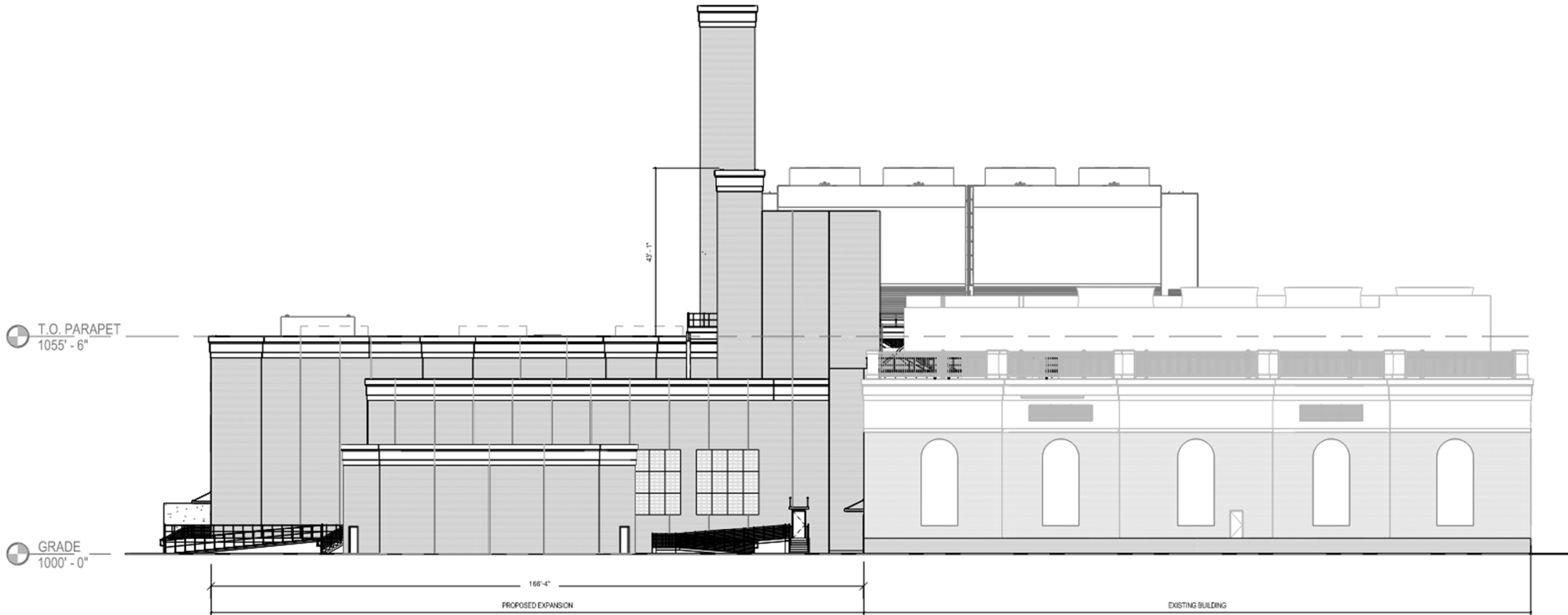
The Application Process



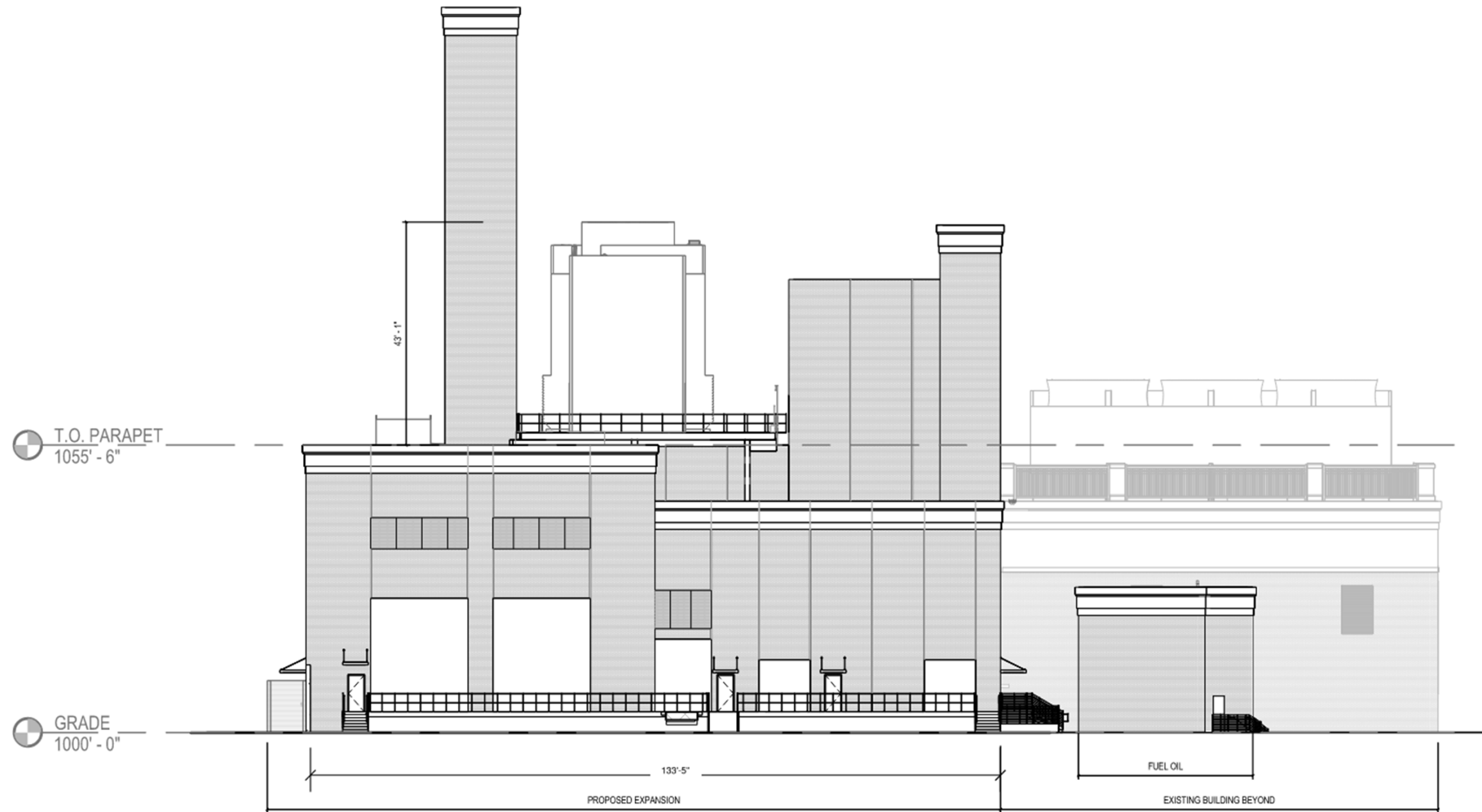
Site Plan



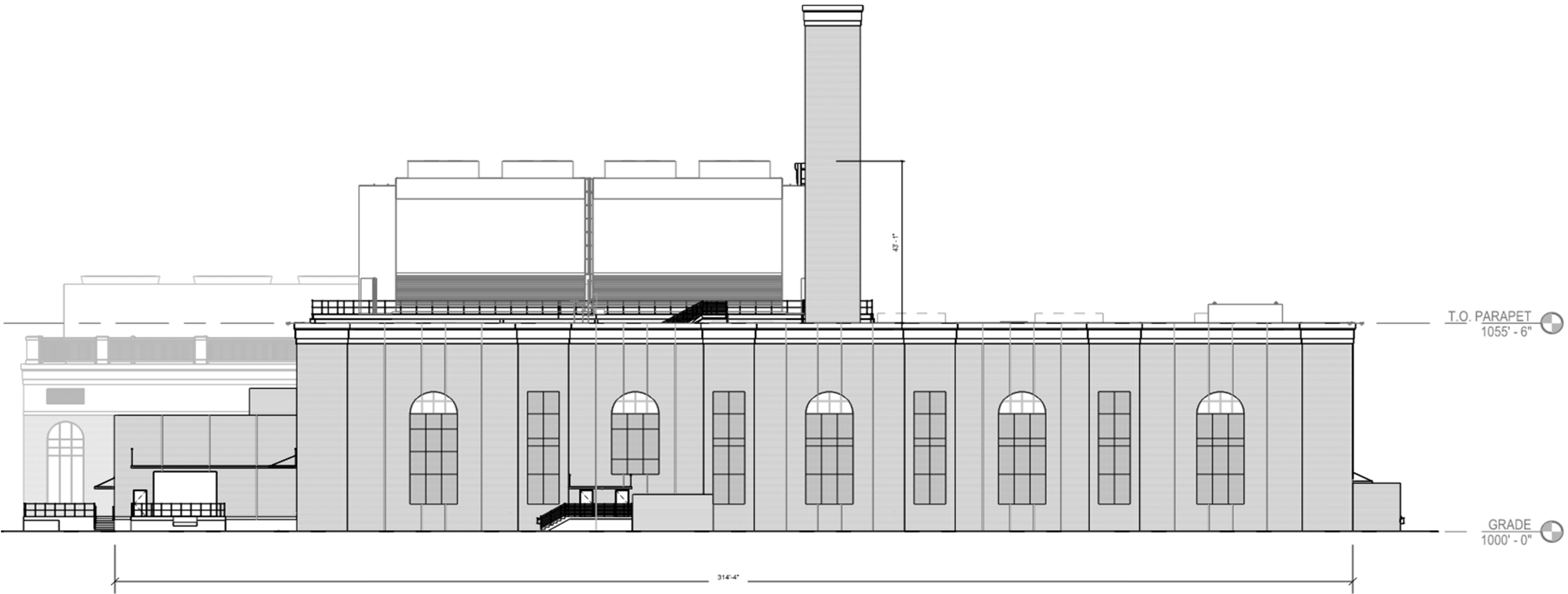
North Elevation



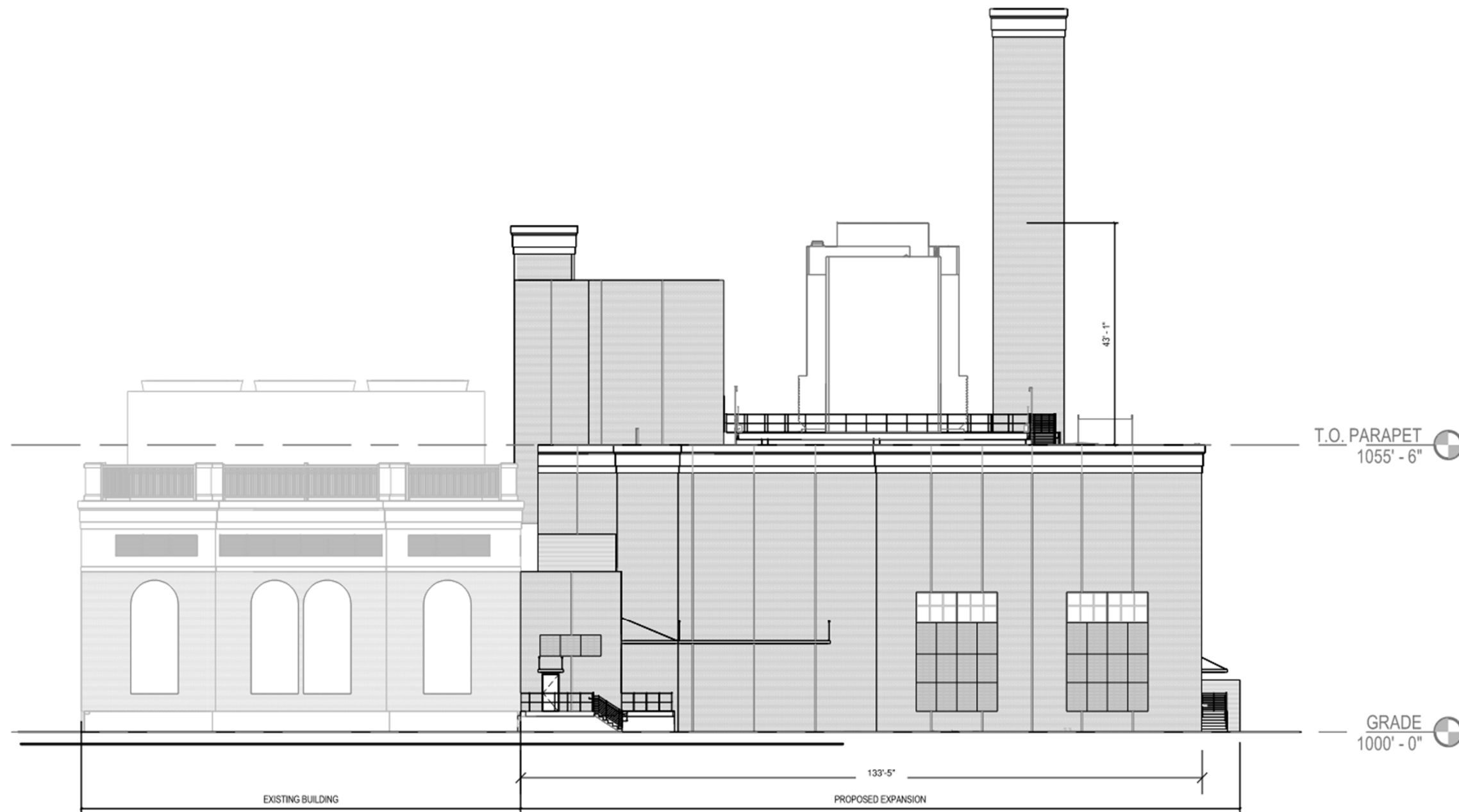
East Elevation



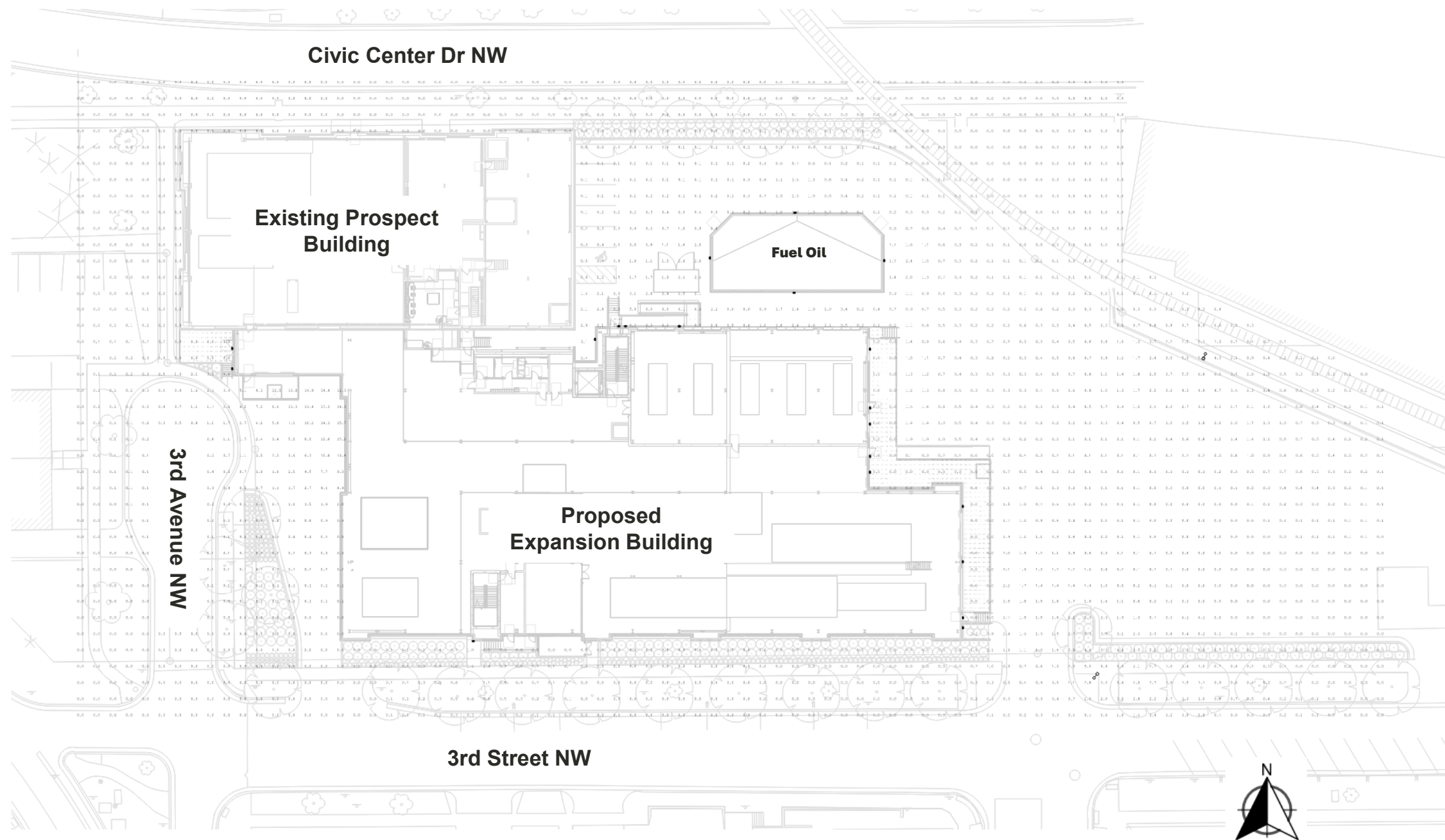
South Elevation



West Elevation



Photometric Plan





Traffic Impacts



- No anticipated increase in total traffic to the site or surrounding streets

Q&A





Still have Questions?



Contact the City of Rochester's Community Development Department with any questions about this application type via email at communitydevelopment@rochestermn.gov or phone 507.328.2600



BURNS  **MCDONNELL**®



wsb 

THANK YOU

**MAYO
CLINIC**

