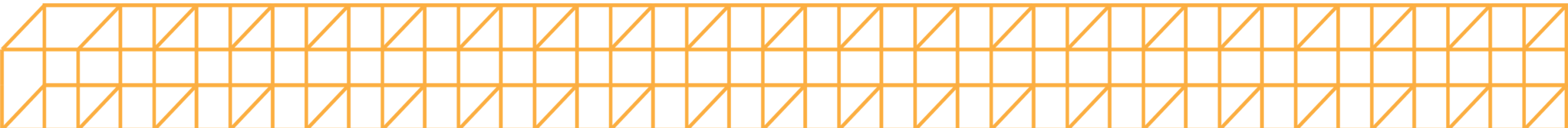

Gonda & Mayo Buildings East Entry Renovation

Presented by WSB

July 25, 2024





Overview



- Introductions
- About our Project
- The Application Process
- Exhibits:
 - Site Plan
 - Landscape Plan
 - Building Elevation
 - Photometric Plan
- Traffic Impacts
- Q&A

Introductions



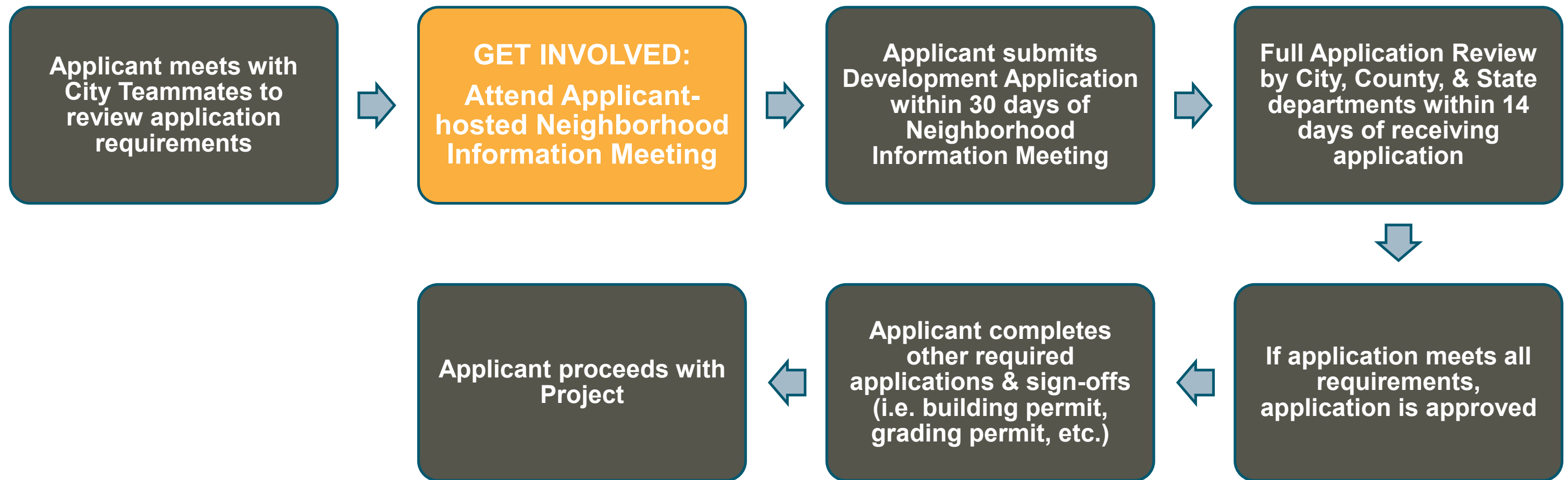
- Mayo Clinic
 - Justin Opperman
 - Ilaya Hopkins
- WSB
 - Brian Frank
 - Andy Masterpole
- CannonDesign
 - John McCallister
 - Goi Artetxe
 - Jennier O'Shea
- Foster + Partners
 - Chris West
 - Rebekah Hieronymus

About the project

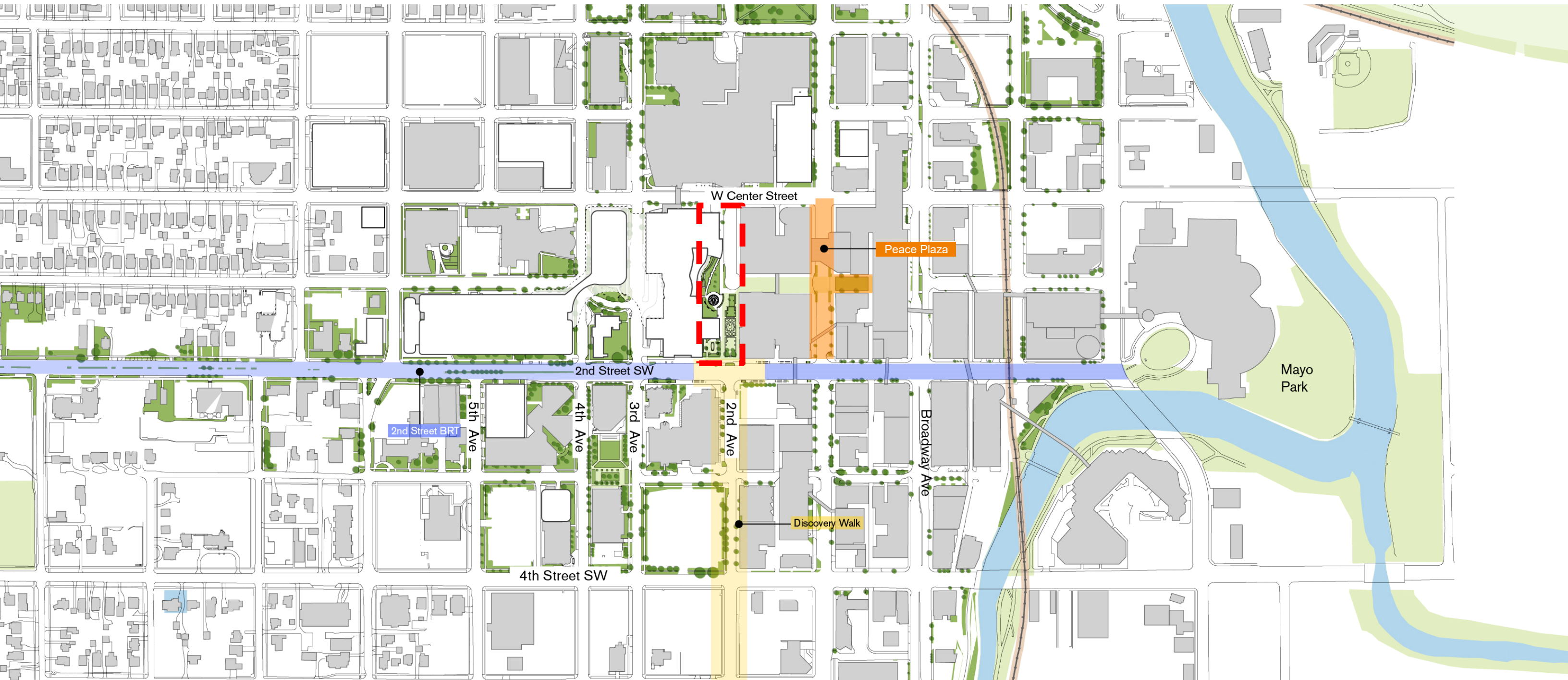


- Ensure a positive patient drop off experience while maintaining pedestrian friendly access to downtown Rochester and a plaza-like feeling.
- The Gonda Building east entrance on 2nd Ave. SW will be for valet only, while the Mayo Building east entrance will be for hotel and private shuttles.
- During the construction of new clinical buildings, patients and visitors who self-park will be directed to other entrances.
- The design intention is to create a high-quality plaza-like feeling that is shared by vehicles and pedestrians, with features such as granite pavement, raised metal planters, sculptures, lighting, bollards, and naturalized landscaping.

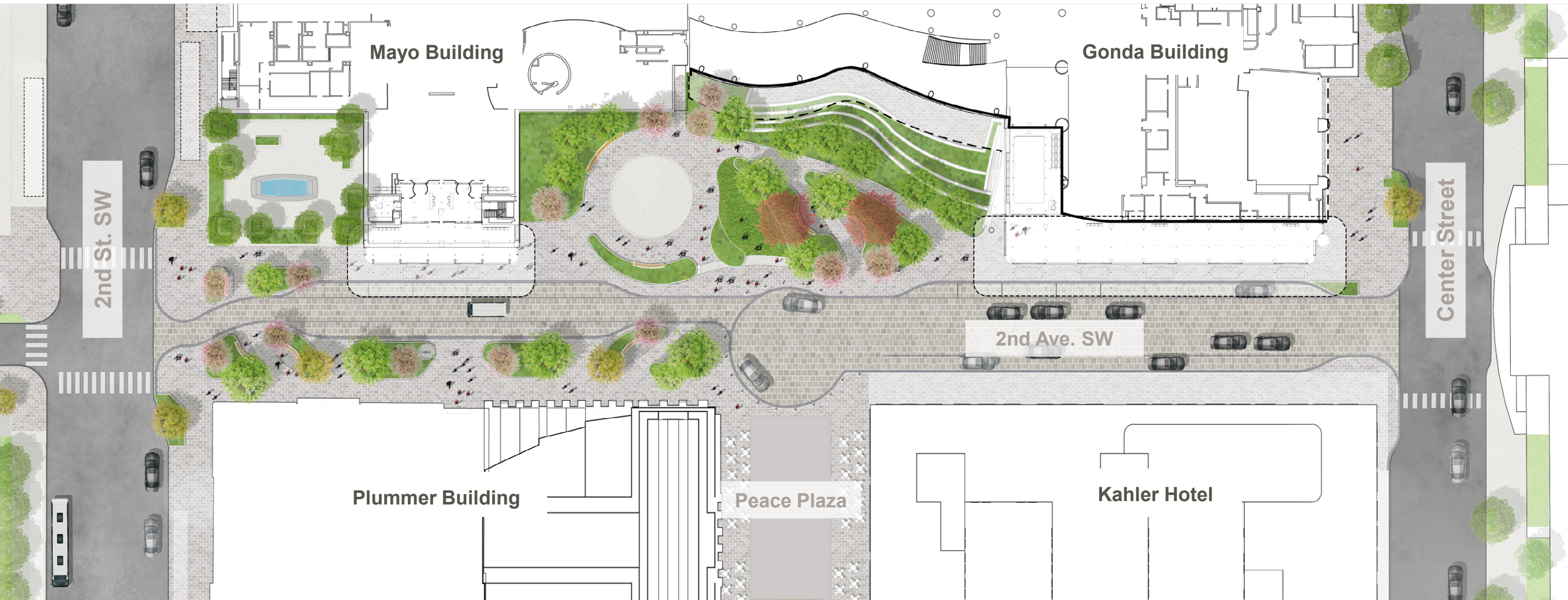
The Application Process



Site Location



Site Plan

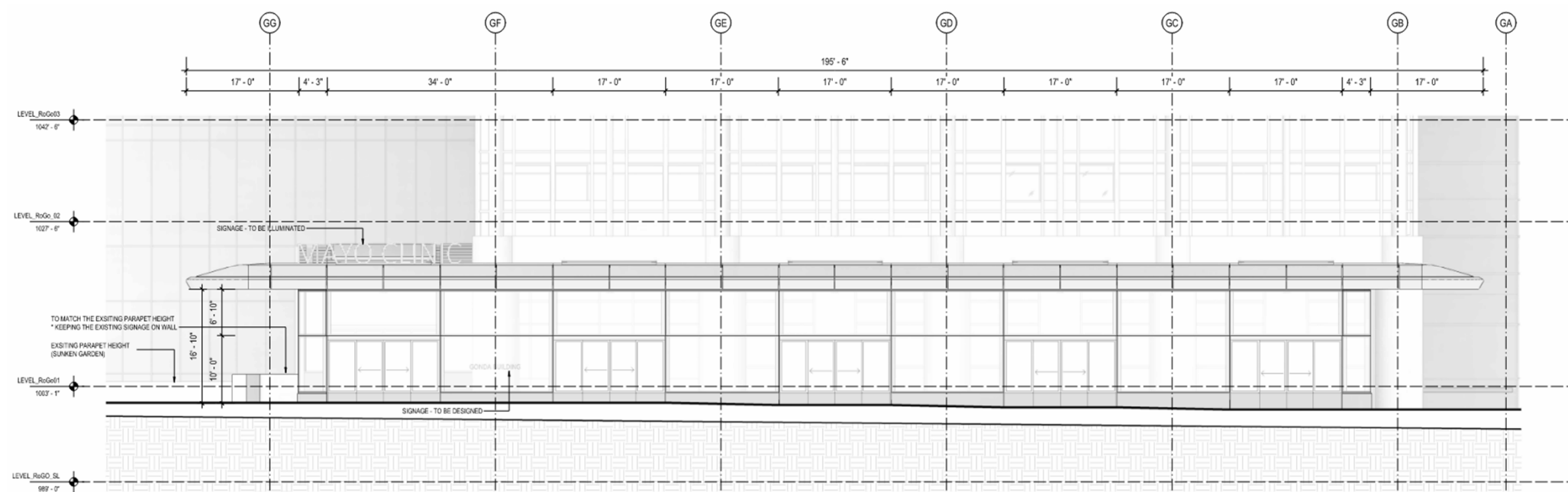


Landscape Plan

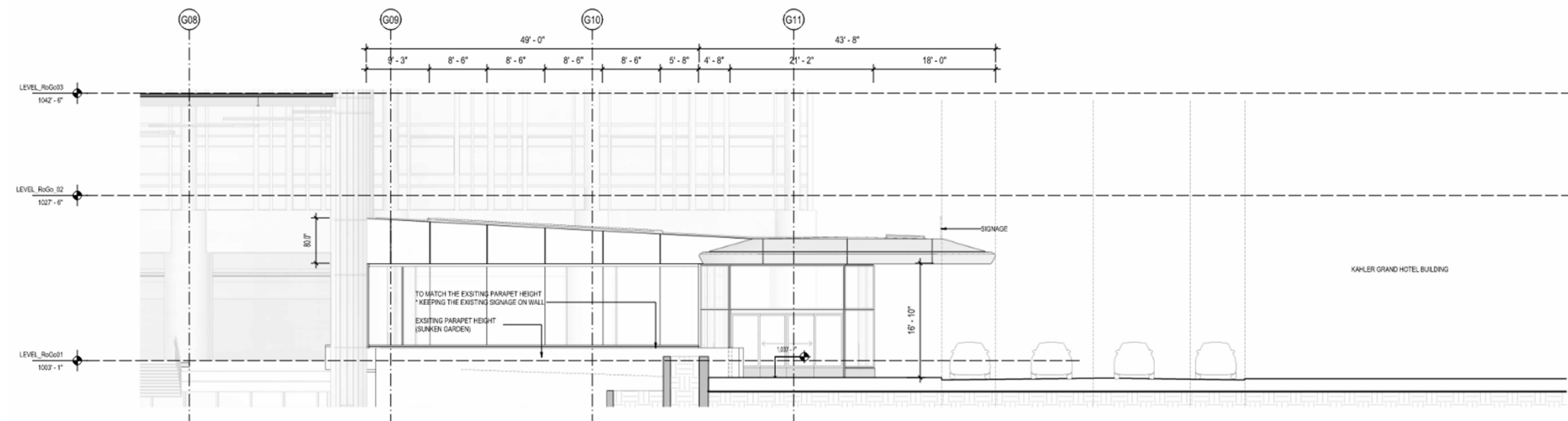
- 1 Existing Gonda terrace garden
- 2 Raised metal planters with integrated bench
- 3 Gonda steps
- 4 Additional steps
- 5 Proposed East Gonda canopy
- 6 Enlarged linear planter
- 7 Seating pockets
- 8 Shared surface



Elevation - Gonda Building East Entrance

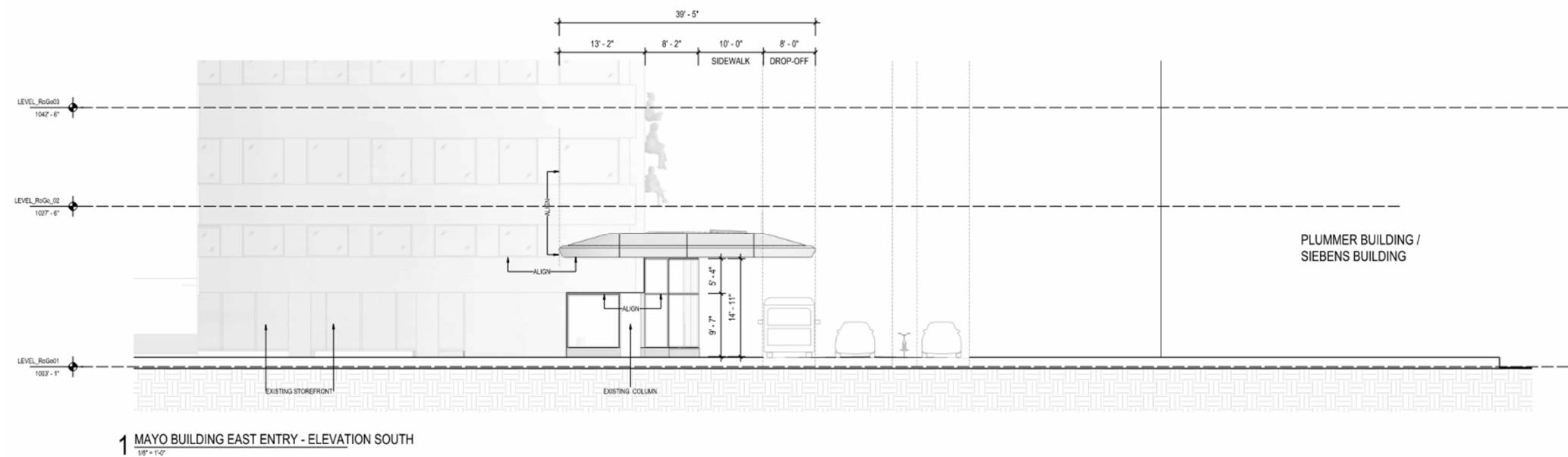
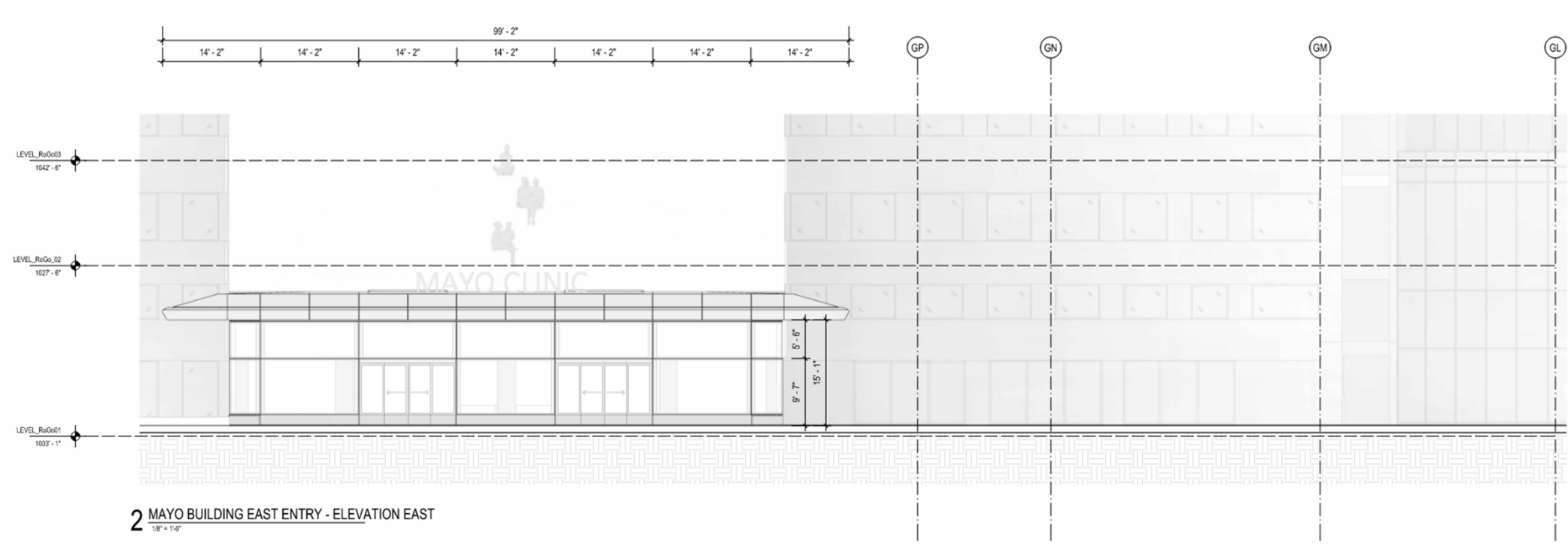


1 GONDA EAST CANOPY ENTRANCE - ELEVATION EAST
1/8" = 1'-0"

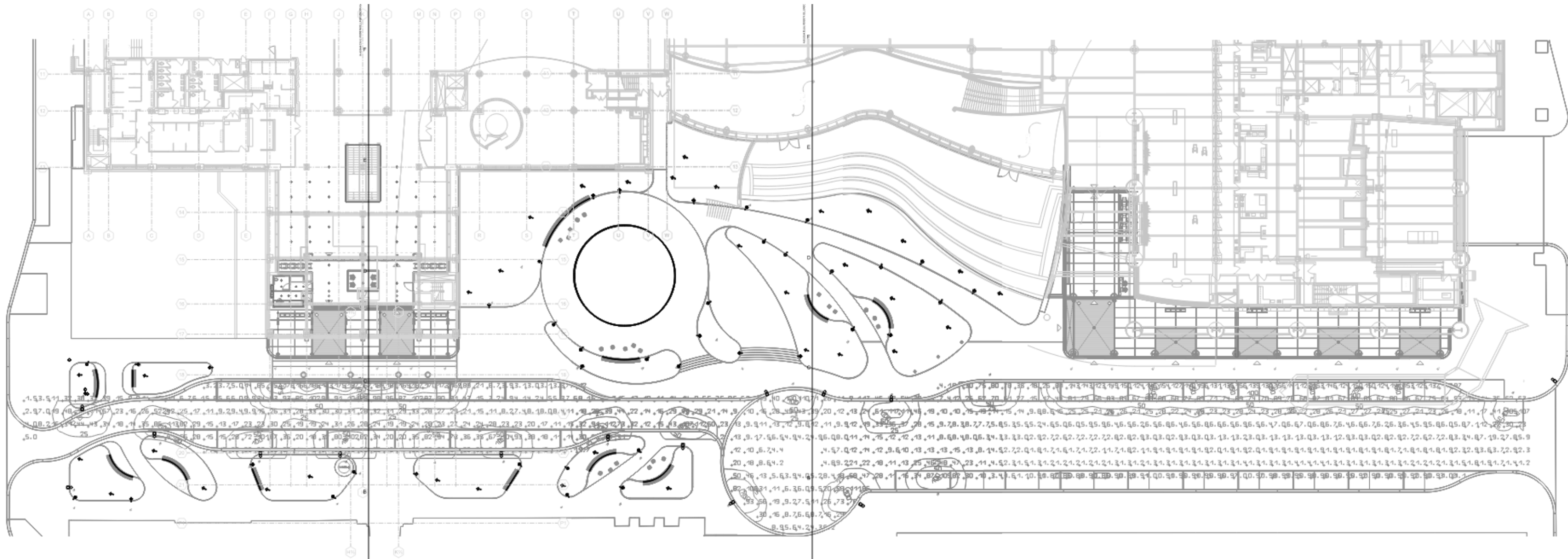


2 GONDA EAST CANOPY ENTRANCE - ELEVATION SOUTH
1/8" = 1'-0"

Elevation - Mayo Building East Entrance

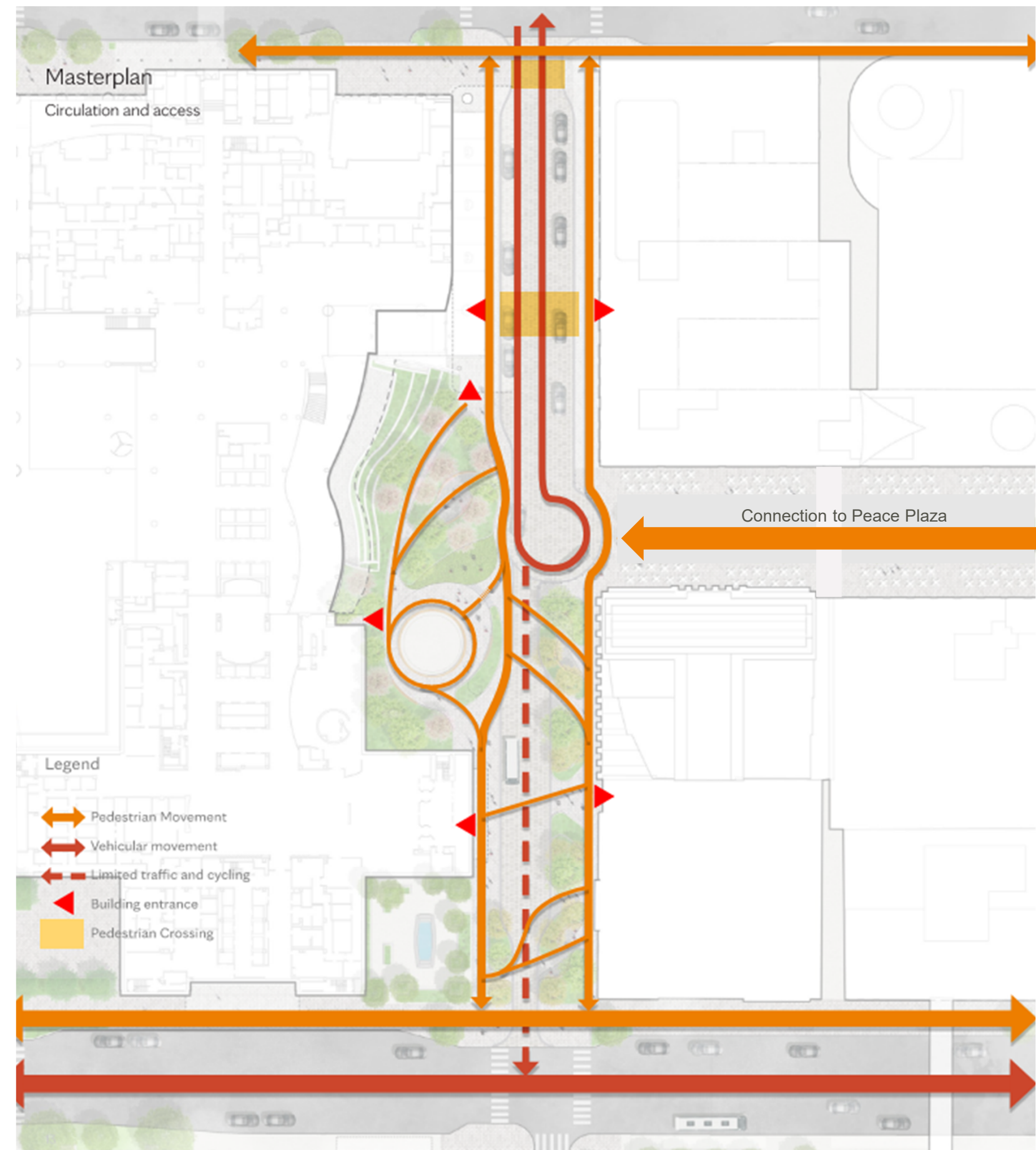


Photometric Plan



Traffic Impacts

- The traffic signal updates to include signal modifications for the temporary south bound approach to 2nd St. SW creating a 4-way intersection.
- Right and left turns only for access West Center St.
- Ongoing work to consider the broader bike network and how bicycles will be routed into and through downtown, with particular attention to the infrastructure in and around the Mayo Clinic campus.



Q&A





Still have Questions?



Contact the City of Rochester's Community Development Department with any questions about this application type via email at communitydevelopment@rochestermn.gov or phone 507.328.2600

Foster + Partners
CANNONDESIGN



wsb 

THANK YOU

MAYO
CLINIC

