

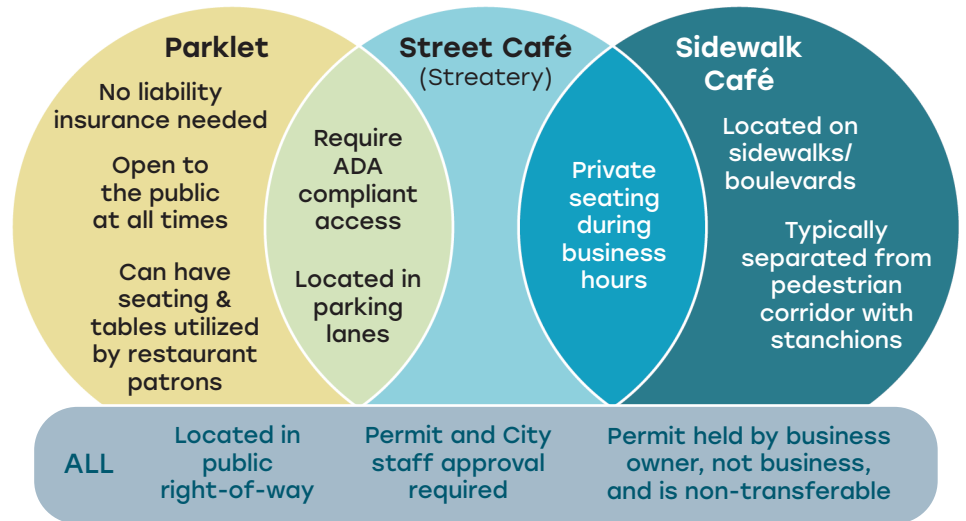
Parklets Street Cafés Sidewalk Cafés

Your guide to what they are, how to apply for one, and how to build and maintain one



Your guide to Choosing the Option That's Right for You

Parklets, street cafés, and sidewalk cafés each have different features, and different requirements. For example, parklets must be open to the public at all times, while either café option can be restricted to patrons during posted business hours. Check the infographic to the right for some of the most important characteristics of each.



Make sure you chose the option that helps you accomplish your business goals!

Your guide to License Application and Approval Process



Your guide to

Design and Construction

Keep these details in mind when designing your space. For a full description of the requirements, visit [Rochester City Ordinance Chapter 9-8](#) and the [Parklet & Street Café Policy](#).

Location Highlights

1. The location should be adjacent to the sponsoring business, i.e. right outside your front door.
2. The parking spaces you use must be unrestricted (no handicap spots) and right next to the sidewalk.
3. Your Parklet or Street Café can use up to three parking spots, including barriers and buffer space.
4. Your seating area, whether a platform or on the street itself, must be ADA accessible, so avoid streets with steep slopes.
5. The street you are on must be 30 mph or less.
6. You can't block hydrants, bike lanes or other public amenities.
7. See this [Location Map](#) for eligible spots, or ask Public Works.

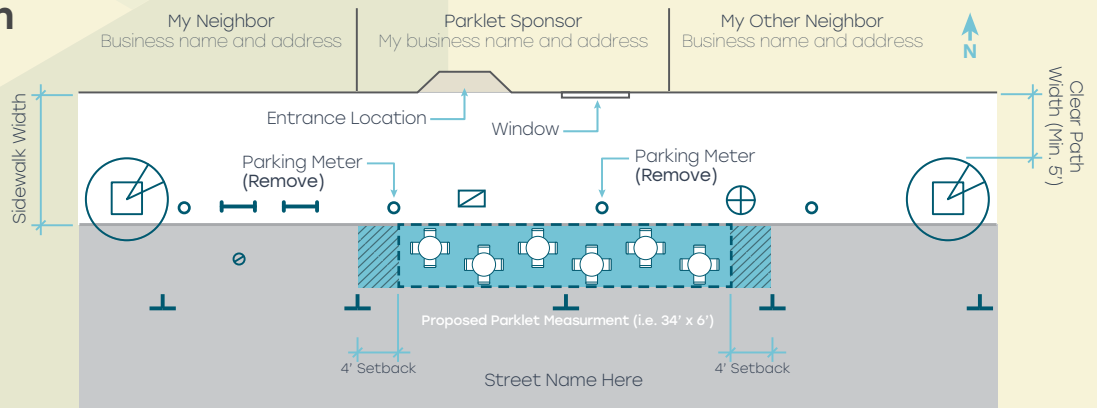


Sample Site Plan

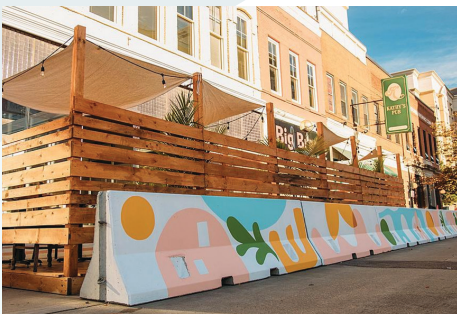
(Can be hand drawn)

Symbol Key

- NORTH ARROW
- EXISTING STREET TREE
- EXISTING STREET LIGHT
- EXISTING PARKING METER
- EXISTING BIKE RACK
- EXISTING UTILITY (in sidewalk and in street)
- EXISTING PARKING SPACE MARKING
- 4 FT REQUIRED PARKLET SETBACK (not to be included in parklet size)



Your plan does not have to be to scale, but should include the elements above, including sidewalk width, clear path width, address, street name, existing utilities and obstructions, and table/chair layout.



Locally Built Deck with Jersey Barrier

Your space must be ADA accessible, so either a platform, level with the sidewalk, or a ramp that meets ADA codes is required.

1. Platforms can be made of many materials, but most often are a framework of wood or steel, with tiles, planks, or panels laid on top.
2. The surface should be easily removable for cleaning and clearing debris below.
3. Common platform materials include tiles (stone, concrete), planks (wood, synthetic), metal panels, or a combination for utility or aesthetics.
4. Ramps should be slip resistant.
5. Ramps should meet ADA code for slope, and have a clear space at the bottom for turning a wheelchair.
6. You can build your own platform or ramp, or purchase products like modular platforms, enclosures, and ramps.
7. Whether you build or buy your structures, they need to provide adequate protection to patrons. Consult with Rochester Public Works before buying materials to determine if your planned structure meets requirements.



Adjustable Deck Supports



Modular deck kit with Steel Planter Barriers



Modular Parklet with Mesh Fence Panels



Temporary Ramps for ADA accessibility

Questions? Ready to Get Started? Contact:

City Clerk's Office

Phone: (507) 328-2900

Email: licenses@rochestermn.gov

OPEN