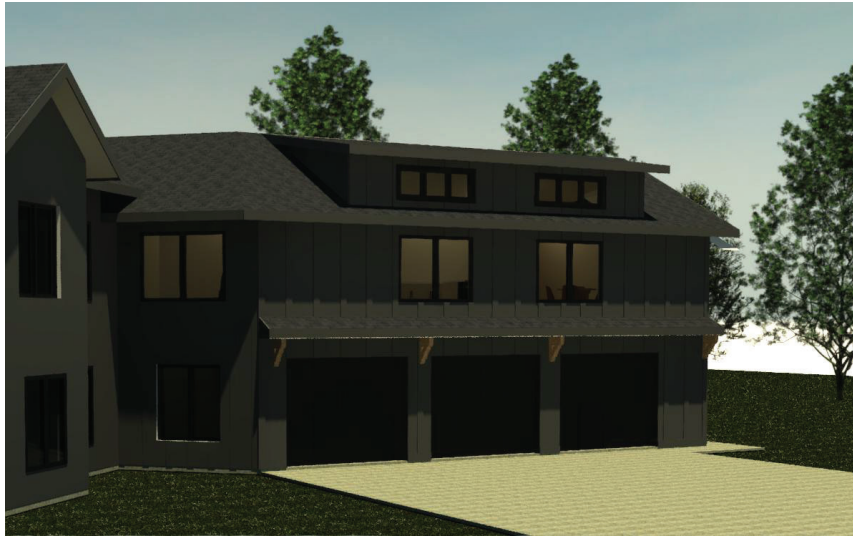




Three-Stall Garage Lofted Guest Cottage

This is a sample design for a three-stall attached garage with Accessory Dwelling Unit loft. City staff has completed a cursory review of the plans, however, a full review will still be required to consider site specific requirements per your property. These plans are intended to be used as a starting point and provide inspiration for designing an ADU that meets your needs.





3
A.1
EXTERIOR VIEW
NTS



3
A.1
EXTERIOR VIEW
NTS

3-STALL ATTACHED GARAGE WITH ADU LOFT

This design is proposed as a basis for a homeowner to investigate the possibilities for an ADU and how it can be adapted to suit their circumstances. The information included here allows the homeowner to have an initial understanding of the scale of an ADU project, and we can help modify it to their needs.

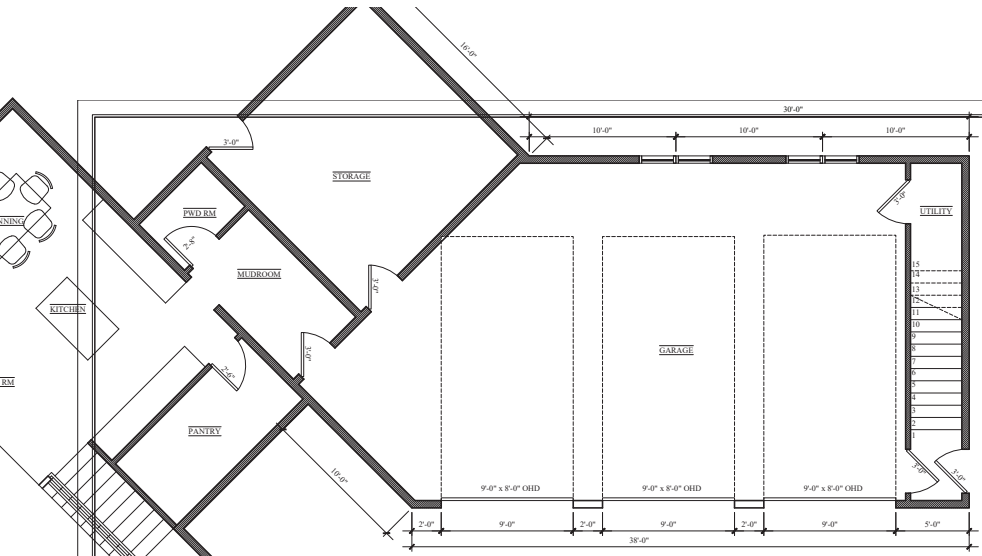
Property line locations, required setbacks, and lot coverage must be confirmed per survey, zoning and fire separation requirements.

Mechanical Equipment:

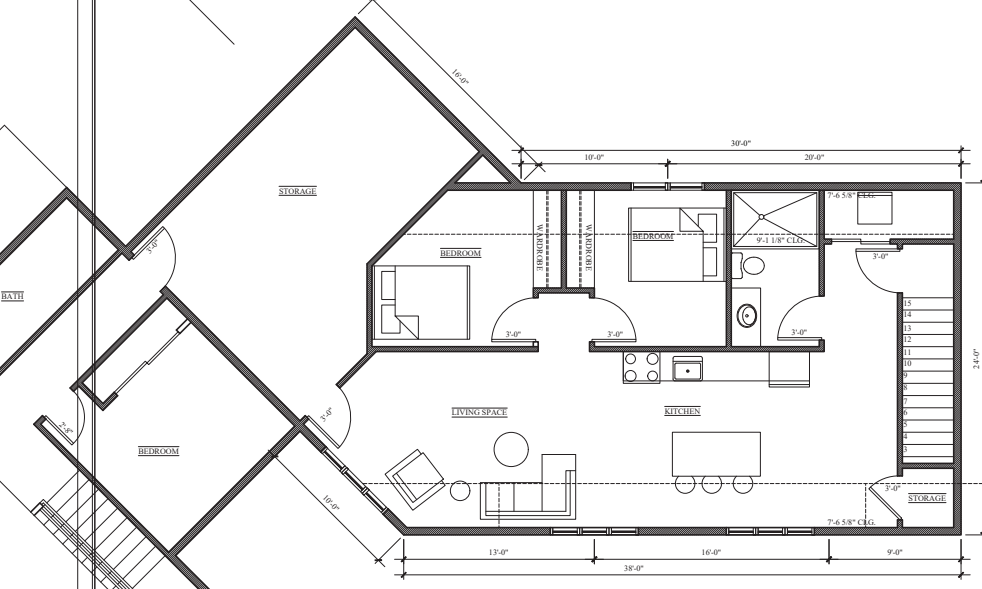
The current plan anticipates an electric, ductless mini-split for both heating and cooling. Water heating is shown as an on-demand hot water heater.



3
A.1
INTERIOR VIEW
NTS

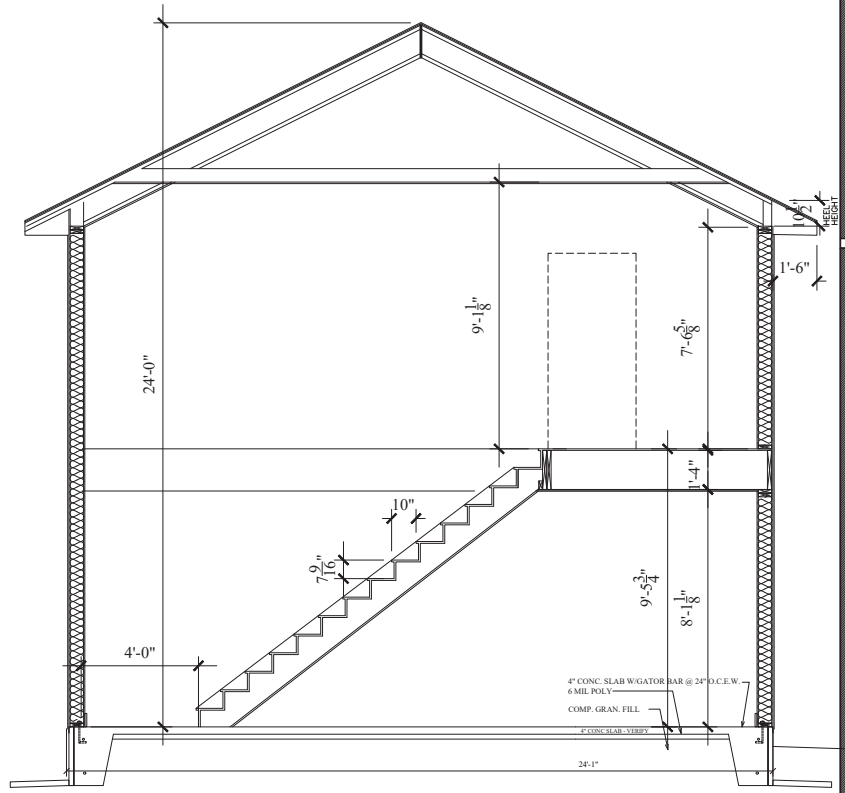


3
A.1
1/4" = 1'-0"
GARAGE FLOOR PLAN



3
A.1
NTS
LOFT FLOOR PLAN

3
A.1
1/4" = 1'-0"
GARAGE FLOOR PLAN



3
A.1
1/2" = 1'-0"
GARAGE SECTION