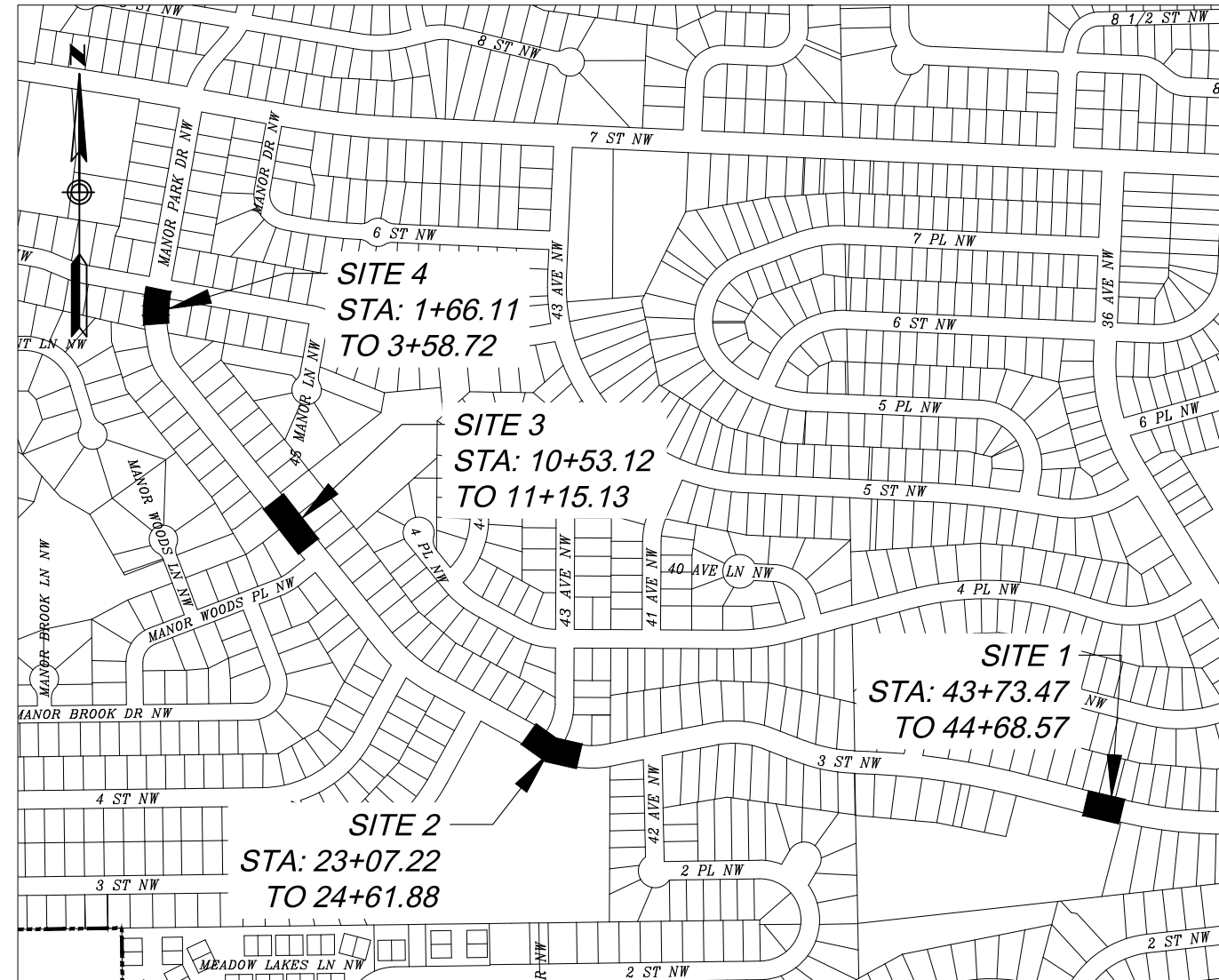




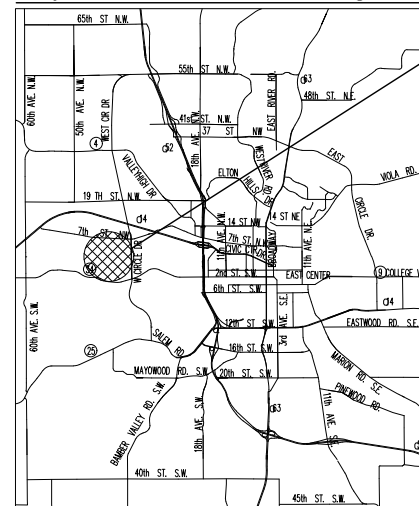
**ROCHESTER
PUBLIC WORKS
MINNESOTA**

MANOR PARK DR NW / 3 ST NW TRAFFIC CALMING

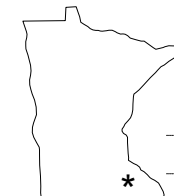
TOWNSHIP 107N RANGE 14W SECTION 32



City of Rochester and surrounding area



APPROXIMATE PROJECT LOCATION

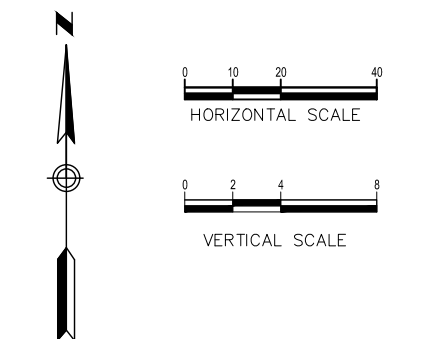


PROJECT LOCATION
OLMSTED COUNTY
ROCHESTER DISTRICT

CONVENTIONAL SIGNS AND ABBREVIATIONS

CORPORATE LIMITS		ACRE	A.
SECTION LINE		ADJ.	ADJ.
RIGHT OF WAY LINE (STATE)		AGG.	AGG.
PROPERTY LINE (STREET)		APP.	APP.
ADDITION LINE		B.M.	B.M.
SURVEY LINE		BIT.	BIT.
CENTER LINE		BR.	BR.
WIRE FENCE		BLDG.	BLDG.
STONE WALL OR FENCE		C.I.P.	C.I.P.
HEDGE		C.B.	C.B.
GUARD RAIL		☉	☉
CREEK OR RIVER		C TO C	C TO C
DRY RUN		C.S.P.	C.S.P.
RAILROAD		CLAY SEWER PIPE	CLAY SEWER PIPE
RAILROAD RIGHT OF WAY LINE		CONC.	CONC.
CURB & GUTTER INP.		CONSTRUCT	CONSTRUCT
SIDEWALK INP.		COR.	COR.
SANITARY SEWER INP.		C.M.P.	C.M.P.
STORM SEWER INP.		C.M.P.-A	C.M.P.-A
WATERMAIN, GATEVALVE & BOX INP.		CR. RK.	CR. RK.
ELECTRIC UNDERGROUND INP.		C & G	C & G
TELEPHONE UNDERGROUND INP.		D L	D L
STEAM MAIN INP.		D R	D R
GAS MAIN INP.		D	D
CURB INP.		Δ	Δ
SAWCUT		DR.	DR.
HYDRANT INP.		DRWY.	DRWY.
TELEPHONE, POWER POLES		D.I.	D.I.
LIGHT POLES		D.I.P.	D.I.P.
TRAFFIC SIGNAL		E.	E.
FIRE ALARM BOX		EL.	EL.
RAILROAD CROSSING SIGN		EMB.	EMB.
RAILROAD CROSSING BELL		ENT.	ENT.
TREE		EQ.	EQ.
STUMP		EST.	EST.
BUILDING		EXC.	EXC.
IRON PIPE		EXP.	EXP.
STONE MONUMENT		F.L.	F.L.
MANHOLE INP.		FT.	FT.
BRICK INP.		FDN.	FDN.
BRIDGE INP.		FR.	FR.
CULVERT INP.		F. & I.	F. & I.
CATCH BASIN INP.		GAL.	GAL.
CURB & GUTTER CONST.		GV	GV
SIDEWALK CONST.		GR.	GR.
SANITARY, STORM SEWER CONST.		H.W.	H.W.
WATERMAIN CONST.		HWY.	HWY.
MANHOLE CONST.		HORIZ.	HORIZ.
CATCH BASIN CONST.		HYD.	HYD.
HYDRANT CONST.		INL.	INL.
CROSS		INPL.	INPL.
TEE		INST.	INST.
TAPPING MACHINE SLEEVE & VALVE		INV.	INV.
BEND, ELBOW		I. P.	I. P.
INCREASER, DECREASER		JCT.	JCT.
CONCRETE		LT.	LT.
SAND		L.	L.
CRUSHED ROCK		LIN.	LIN.
BITUMINOUS		L.W.	L.W.
CLEAR & GRUB TREE		M.H.	M.H.
REMOVE BITUMINOUS		MIN.	MIN.
REMOVE CONCRETE		MISC.	MISC.
SOIL BORING LOCATION		MON.	MON.
		N.	N.
		N.E.	N.E.
		N.W.	N.W.
		NO.	NO.
		OUTL.	OUTL.
		PERF.	PERF.
		PIPE	PIPE
		P.C.	P.C.
		P.I.	P.I.
		P.T.	P.T.
		P.O.T.	P.O.T.
		R.	R.
		R.R.	R.R.
		REINF.	REINF.
		R.C.P.	R.C.P.
		RET.	RET.
		RT.	RT.
		SAN.	SAN.
		SEW.	SEW.
		S.W.	S.W.
		S.	S.
		S.E.	S.E.
		SPEC.	SPEC.
		STD.	STD.
		STA.	STA.
		ST.	ST.
		ST. STATE, STUCCO	ST. STATE, STUCCO
		STREET, STONE, STEEL	STREET, STONE, STEEL
		SUBDRAIN	SUBDRAIN
		SURF.	SURF.
		TAN.	TAN.
		T.P.	T.P.
		VAR.	VAR.
		V.M.	V.M.
		VERT.	VERT.
		V.C.	V.C.
		VIT.	VIT.
		W.	W.

NOTE: SECTION NUMBERS READ FROM SOUTH



GOVERNING SPECIFICATIONS

State of Minnesota
The 2020 edition of the Minnesota Department of Transportation "Standard Specifications for Construction" shall govern except as modified by special provision.

City of Rochester, Minnesota
Standard Specifications for Street and Utility Construction, 2022 Edition

UTILITY QUALITY LEVEL

The subsurface utility information in this plan is quality level Q. This quality level was determined according to the guidelines of C/ASCE 38-2, entitled "Standard Guidelines for the Collection and Depiction of Existing Subsurface Utility Data."

INDEX TO PLANS

Sheet Title	Sht. No.
TITLE SHEET	1
ESTIMATED QUANTITIES	2
TABULATIONS	3
DETAILS	4-9
REMOVALS	10-12
GRADING	13-18
EROSION CONTROL & TURF ESTABLISHMENT	19-21
STRIPING	22-24

This plan contains 24 Total sheets



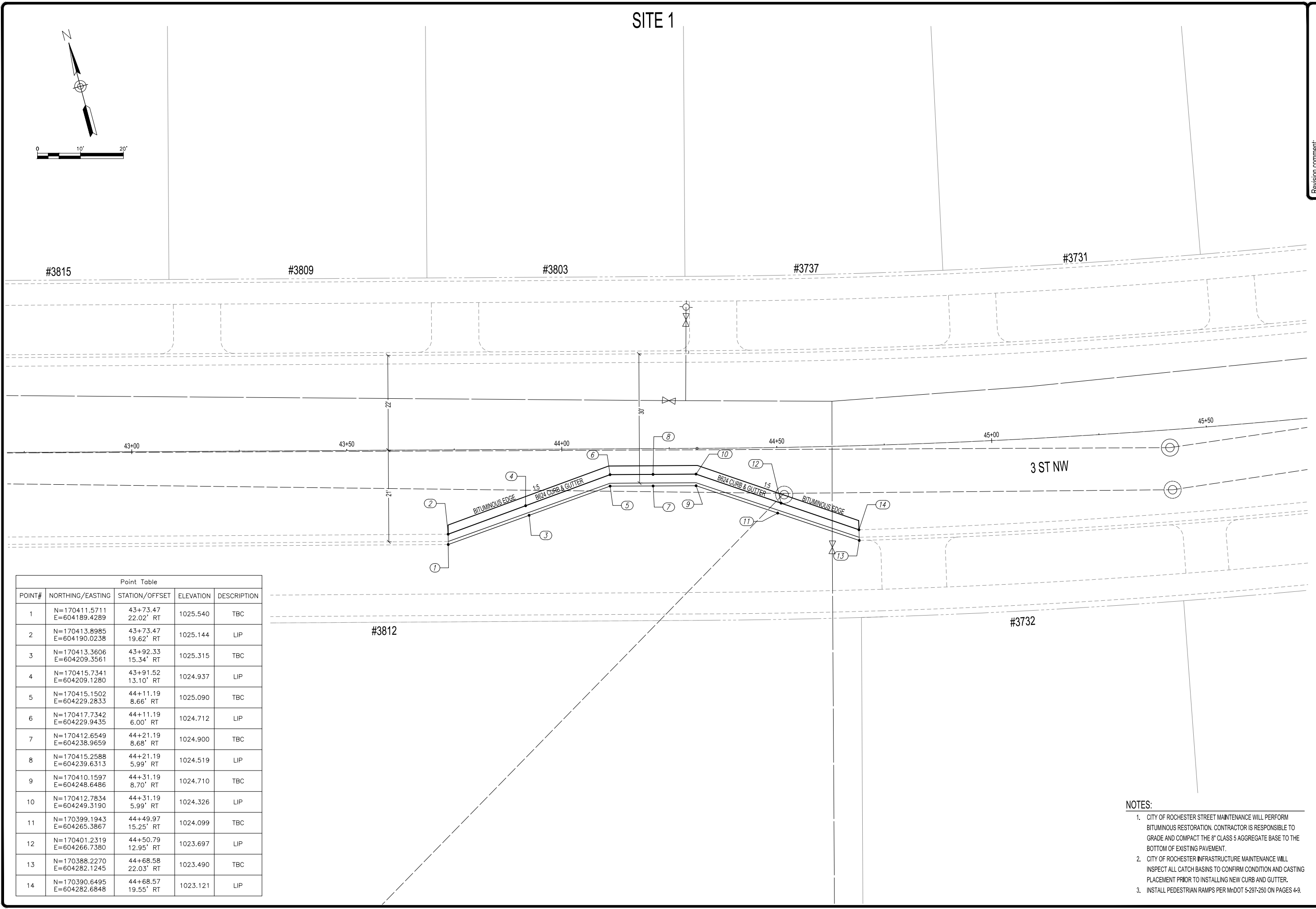
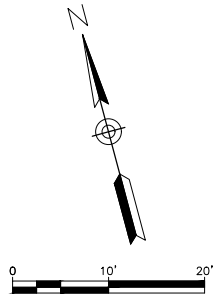
4001 W River Parkway NW
Suite 100 - DSIC
Rochester, MN 55901
Phone: (507) 328-2400
Fax: (507) 328-2401

Dylan J. Koch 7/1/2022
Dylan J. Koch, Design Technician Date

Sam Budzyna
Sam Budzyna, Traffic Engineer: I hereby certify that this plan was prepared by me or under my direct supervision, and that I am a duly Licensed Professional Engineer under the laws of the state of Minnesota.
Date: 7/1/2022 License Number 55322

Dillon S. Dombrowski 7/1/2022
Approved: Dillon Dombrowski, City of Rochester Engineer Date

SITE 1



Point Table				
POINT#	NORTHING/EASTING	STATION/OFFSET	ELEVATION	DESCRIPTION
1	N=170411.5711 E=604189.4289	43+73.47 22.02' RT	1025.540	TBC
2	N=170413.8985 E=604190.0238	43+73.47 19.62' RT	1025.144	LIP
3	N=170413.3606 E=604209.3561	43+92.33 15.34' RT	1025.315	TBC
4	N=170415.7341 E=604209.1280	43+91.52 13.10' RT	1024.937	LIP
5	N=170415.1502 E=604229.2833	44+11.19 8.66' RT	1025.090	TBC
6	N=170417.7342 E=604229.9435	44+11.19 6.00' RT	1024.712	LIP
7	N=170412.6549 E=604238.9659	44+21.19 8.68' RT	1024.900	TBC
8	N=170415.2588 E=604239.6313	44+21.19 5.99' RT	1024.519	LIP
9	N=170410.1597 E=604248.6486	44+31.19 8.70' RT	1024.710	TBC
10	N=170412.7834 E=604249.3190	44+31.19 5.99' RT	1024.326	LIP
11	N=170399.1943 E=604265.3867	44+49.97 15.25' RT	1024.099	TBC
12	N=170401.2319 E=604266.7380	44+50.79 12.95' RT	1023.697	LIP
13	N=170388.2270 E=604282.1245	44+68.58 22.03' RT	1023.490	TBC
14	N=170390.6495 E=604282.6848	44+68.57 19.55' RT	1023.121	LIP

- NOTES:**
- CITY OF ROCHESTER STREET MAINTENANCE WILL PERFORM BITUMINOUS RESTORATION. CONTRACTOR IS RESPONSIBLE TO GRADE AND COMPACT THE 8" CLASS 5 AGGREGATE BASE TO THE BOTTOM OF EXISTING PAVEMENT.
 - CITY OF ROCHESTER INFRASTRUCTURE MAINTENANCE WILL INSPECT ALL CATCH BASINS TO CONFIRM CONDITION AND CASTING PLACEMENT PRIOR TO INSTALLING NEW CURB AND GUTTER.
 - INSTALL PEDESTRIAN RAMPS PER MnDOT 5-297-250 ON PAGES 4-9.

Revision comment: ...
Revised: ...

I hereby certify that this plan was prepared by me or under my direct supervision and that I am a duly Licensed Professional Engineer under the laws of the State of Minnesota.
Karen Buga
Date: 7/18/22 Lic. No. 55322

401 W River Parkway NW - Suite 100
Rochester, MN 55901
www.rochestermn.gov/departments/public-works
Phone: (507) 336-2400 FAX: (507) 336-2401

ROCHESTER PUBLIC WORKS MINNESOTA

GRADING
MANOR PARK DR NW / 3 ST NW TRAFFIC CALMING
SITE 1

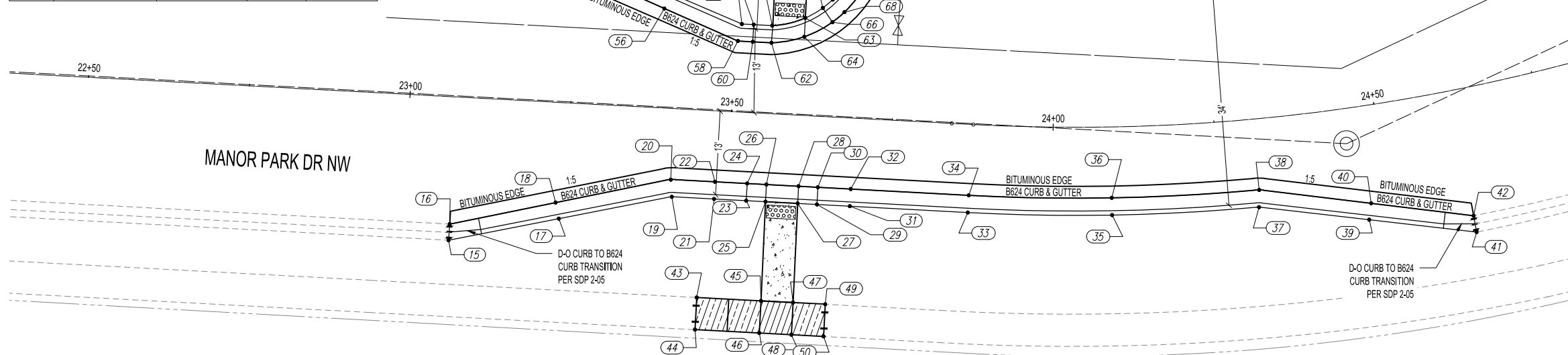
Designer: DLK
Checker: SOB

Fed. Project No.
S.A.P. No.
City Job# J8208
Sheet 13 of 22 Sheets

SITE 2

Point Table				
POINT#	NORTHING/EASTING	STATION/OFFSET	ELEVATION	DESCRIPTION
51	N=170688.3683 E=602212.7386	23+27.11 -22.36' LT	1125.570	TBC
52	N=170686.1546 E=602211.5298	23+27.11 -19.84' LT	1125.276	LIP
53	N=170684.6174 E=602216.0210	23+31.79 -20.65' LT	1125.530	TBC
54	N=170683.0318 E=602214.1923	23+30.95 -18.38' LT	1125.152	LIP
55	N=170678.8481 E=602221.0699	23+38.99 -18.01' LT	1125.296	TBC
56	N=170676.7001 E=602219.5908	23+38.72 -15.42' LT	1124.903	LIP
57	N=170669.3278 E=602229.4013	23+50.87 -13.67' LT	1124.907	TBC
58	N=170667.2172 E=602227.7036	23+50.39 -11.00' LT	1124.528	LIP
59	N=170668.4461 E=602231.0110	23+52.71 -13.67' LT	1124.869	TBC
60	N=170666.1061 E=602229.7294	23+52.71 -11.00' LT	1124.459	LIP
61	N=170667.0584 E=602233.5446	23+55.59 -13.67' LT	1124.360	TBC
62	N=170664.7058 E=602232.2822	23+55.62 -11.00' LT	1124.401	LIP
63	N=170665.9079 E=602238.6896	23+60.66 -15.13' LT	1124.280	TBC
64	N=170663.3398 E=602237.2889	23+60.66 -12.20' LT	1124.297	LIP
65	N=170666.1317 E=602241.8195	23+63.30 -16.83' LT	1124.510	TBC
66	N=170663.4885 E=602242.1995	23+64.90 -14.69' LT	1124.174	LIP
67	N=170666.6318 E=602243.7805	23+64.78 -18.21' LT	1124.427	TBC
68	N=170664.0775 E=602244.5586	23+66.69 -16.34' LT	1124.119	LIP
69	N=170669.2119 E=602248.4505	23+67.63 -22.72' LT	1124.367	TBC
70	N=170667.1178 E=602250.1078	23+70.09 -21.68' LT	1123.959	LIP
71	N=170675.8647 E=602253.3135	23+68.70 -30.89' LT	1124.271	TBC
72	N=170674.6051 E=602255.6240	23+71.33 -30.89' LT	1123.920	LIP
73	N=170678.4765 E=602254.7887	23+68.74 -33.89' LT	1123.990	TBC
74	N=170677.2272 E=602257.0639	23+71.34 -33.88' LT	1123.947	LIP
75	N=170682.8283 E=602257.2468	23+68.81 -38.88' LT	1124.010	TBC
76	N=170681.5812 E=602259.4430	23+71.33 -38.84' LT	1123.991	LIP

Point Table				
POINT#	NORTHING/EASTING	STATION/OFFSET	ELEVATION	DESCRIPTION
77	N=170685.4383 E=602258.7211	23+68.85 -41.88' LT	1124.320	TBC
78	N=170684.3178 E=602260.9315	23+71.32 -41.96' LT	1124.019	LIP
79	N=170689.8968 E=602260.9843	23+68.69 -46.88' LT	1124.390	TBC
80	N=170688.7978 E=602263.1471	23+71.11 -46.95' LT	1124.064	LIP
81	N=170686.7510 E=602250.0582	23+60.62 -38.87' LT	1124.690	SW
82	N=170691.2368 E=602252.2469	23+60.38 -43.86' LT	1124.912	SW
83	N=170693.5680 E=602248.0009	23+55.54 -43.86' LT	1125.076	SW
84	N=170689.1452 E=602245.6687	23+55.62 -38.86' LT	1124.780	SW
85	N=170691.5470 E=602241.2834	23+50.62 -38.86' LT	1125.206	SW
86	N=170687.2366 E=602238.9334	23+50.63 -33.95' LT	1125.151	SW
87	N=170684.7557 E=602243.2745	23+55.63 -33.86' LT	1124.730	SW
88	N=170680.3662 E=602240.8803	23+55.63 -28.86' LT	1124.705	SW
89	N=170675.9766 E=602238.4861	23+55.64 -23.86' LT	1124.680	SW
90	N=170673.5824 E=602242.8756	23+60.64 -23.87' LT	1124.590	SW
91	N=170677.9720 E=602245.2698	23+60.63 -28.87' LT	1124.615	SW
92	N=170682.3615 E=602247.6640	23+60.63 -33.87' LT	1124.640	SW

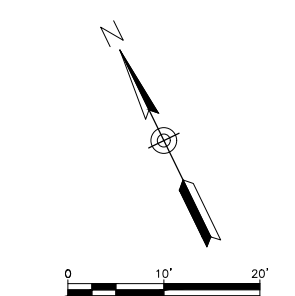


Point Table				
POINT#	NORTHING/EASTING	STATION/OFFSET	ELEVATION	DESCRIPTION
15	N=170658.7988 E=602173.8058	23+07.17 22.28' RT	1125.992	TBC
16	N=170660.9795 E=602175.0510	23+07.21 19.76' RT	1125.735	LIP
17	N=170654.4030 E=602190.6953	23+24.09 18.02' RT	1125.779	TBC
18	N=170656.8670 E=602191.3303	23+23.47 15.55' RT	1125.399	LIP
19	N=170649.8592 E=602207.9759	23+41.43 13.70' RT	1125.401	TBC
20	N=170652.3277 E=602208.9942	23+41.14 11.05' RT	1125.036	LIP
21	N=170646.7176 E=602213.7522	23+48.01 13.68' RT	1125.277	TBC
22	N=170649.0594 E=602215.0348	23+48.01 11.01' RT	1124.897	LIP
23	N=170644.3157 E=602218.1375	23+53.01 13.68' RT	1125.177	TBC
24	N=170646.6575 E=602219.4201	23+53.01 11.01' RT	1124.797	LIP

Point Table				
POINT#	NORTHING/EASTING	STATION/OFFSET	ELEVATION	DESCRIPTION
25	N=170642.8747 E=602220.7684	23+56.01 13.68' RT	1124.710	TBC
26	N=170645.2163 E=602222.0513	23+56.01 11.01' RT	1124.752	LIP
27	N=170640.4728 E=602225.1537	23+61.01 13.68' RT	1124.635	TBC
28	N=170642.8145 E=602226.4363	23+61.01 11.01' RT	1124.677	LIP
29	N=170639.0315 E=602227.7851	23+64.01 13.68' RT	1125.040	TBC
30	N=170641.3732 E=602229.0677	23+64.01 11.01' RT	1124.632	LIP
31	N=170636.5729 E=602232.2738	23+69.12 13.68' RT	1124.901	TBC
32	N=170638.9147 E=602233.5564	23+69.12 11.01' RT	1124.500	LIP
33	N=170627.7599 E=602248.3641	23+87.47 13.68' RT	1124.380	TBC
34	N=170630.1017 E=602249.6467	23+87.47 11.01' RT	1124.000	LIP

Point Table				
POINT#	NORTHING/EASTING	STATION/OFFSET	ELEVATION	DESCRIPTION
35	N=170617.6983 E=602268.3973	24+08.92 13.67' RT	1123.629	TBC
36	N=170620.1255 E=602269.5098	24+08.92 11.00' RT	1123.247	LIP
37	N=170608.9190 E=602289.4921	24+30.78 13.69' RT	1122.726	TBC
38	N=170611.3142 E=602290.6719	24+31.04 11.04' RT	1122.361	LIP
39	N=170599.7583 E=602304.0796	24+46.72 17.62' RT	1121.977	TBC
40	N=170601.9239 E=602305.4485	24+47.34 15.15' RT	1121.598	LIP
41	N=170590.8049 E=602318.2895	24+61.84 22.32' RT	1121.190	TBC
42	N=170593.2899 E=602318.9583	24+61.86 19.75' RT	1120.902	LIP
43	N=170634.0966 E=602204.6935	23+46.12 29.10' RT	1126.389	SW
44	N=170629.7239 E=602202.2996	23+46.13 34.09' RT	1126.428	SW

Point Table				
POINT#	NORTHING/EASTING	STATION/OFFSET	ELEVATION	DESCRIPTION
45	N=170629.3047 E=602213.4706	23+56.12 29.09' RT	1126.089	SW
46	N=170624.9224 E=602211.0710	23+56.12 34.09' RT	1126.114	SW
47	N=170626.9151 E=602217.8626	23+61.12 29.08' RT	1125.998	SW
48	N=170622.5207 E=602215.4570	23+61.12 34.08' RT	1126.023	SW
49	N=170624.4994 E=602222.2403	23+66.12 29.09' RT	1125.930	SW
50	N=170620.1211 E=602219.8403	23+66.12 34.08' RT	1125.948	SW



- NOTES:**
- CITY OF ROCHESTER STREET MAINTENANCE WILL PERFORM BITUMINOUS RESTORATION. CONTRACTOR IS RESPONSIBLE TO GRADE AND COMPACT THE 8" CLASS 5 AGGREGATE BASE TO THE BOTTOM OF EXISTING PAVEMENT.
 - CITY OF ROCHESTER INFRASTRUCTURE MAINTENANCE WILL INSPECT ALL CATCH BASINS TO CONFIRM CONDITION AND CASTING PLACEMENT PRIOR TO INSTALLING NEW CURB AND GUTTER.
 - INSTALL PEDESTRIAN RAMPS PER MNDOT 5-297-250 ON PAGES 4-8.

Revision comment: ...
Revised: ...

I hereby certify that this plan was prepared by me or under my direct supervision and that I am a duly Licensed Professional Engineer under the laws of the State of Minnesota.
K. Alan Buga
Date: 7/18/22 Lic. No. 55322

401 W River Parkway NW, Suite 100
Rochester, MN 55901
www.rochesterminn.gov/departments/publicworks
Phone: (507) 336-2400 FAX: (507) 336-2401

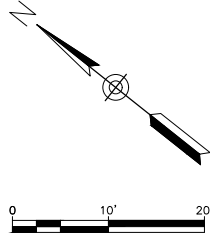
ROCHESTER PUBLIC WORKS MINNESOTA

GRADING
MANOR PARK DR NW / 3 ST NW TRAFFIC CALMING
SITE 2

Designer: DLK
Checker: SCB

Fed. Project No.
S.A.P. No.
City Job# J8208
Sheet 14 of 22 Sheets

SITE 3



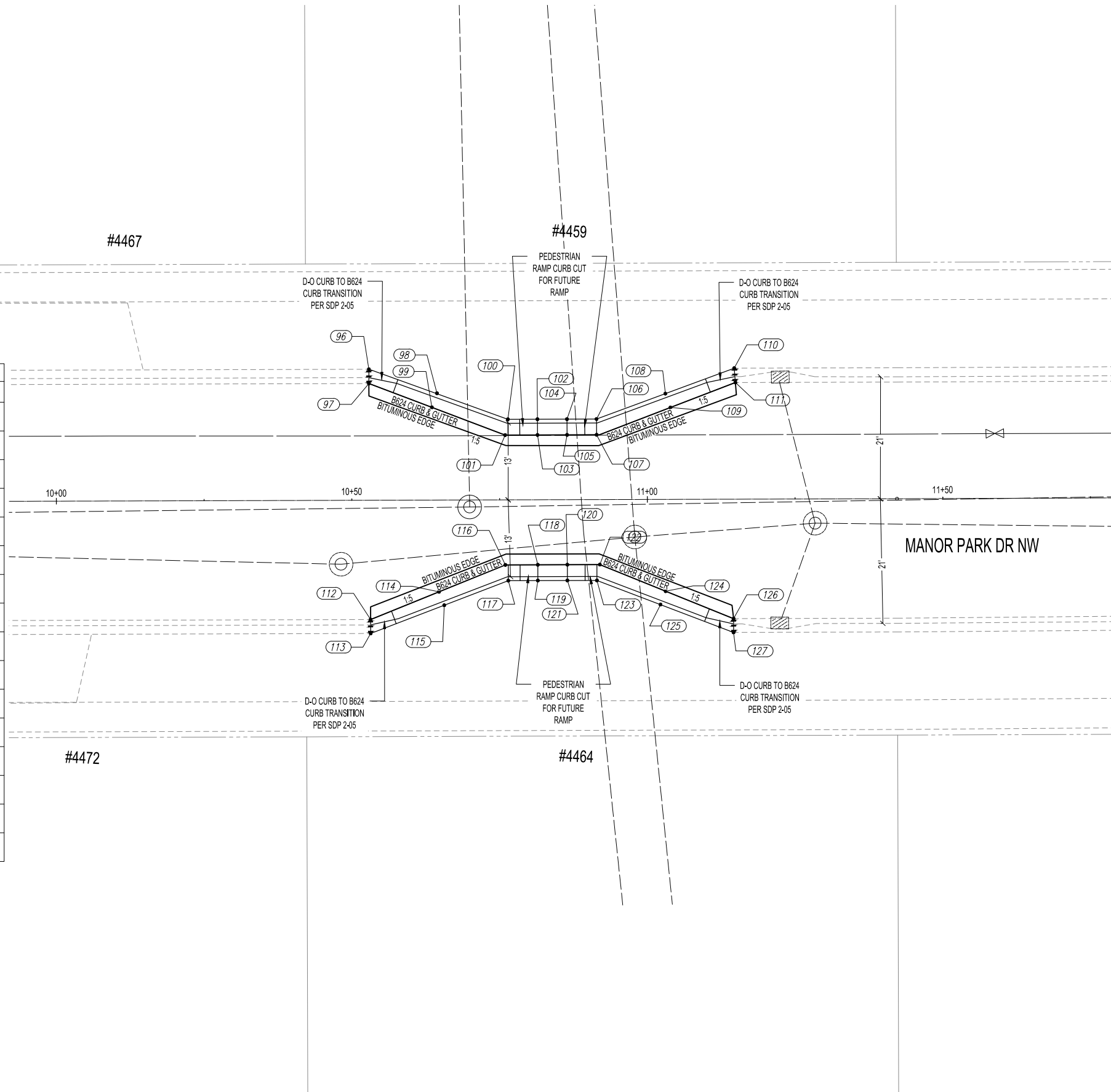
#4475

#4467

#4459

#4451

Point Table				
POINT#	NORTHING/EASTING	STATION/OFFSET	ELEVATION	DESCRIPTION
96	N=171520.8222 E=601287.9139	10+52.95 -22.17' LT	1101.420	TBC
97	N=171519.3165 E=601286.0265	10+52.95 -19.75' LT	1101.211	LIP
98	N=171509.2683 E=601291.8947	10+64.46 -18.07' LT	1101.165	TBC
99	N=171508.4617 E=601289.4872	10+63.59 -15.69' LT	1101.086	LIP
100	N=171497.1266 E=601295.8961	10+76.45 -13.63' LT	1101.180	TBC
101	N=171495.8299 E=601293.5151	10+75.98 -10.96' LT	1100.941	LIP
102	N=171493.2174 E=601299.0134	10+81.45 -13.63' LT	1100.800	TBC
103	N=171491.5527 E=601296.9258	10+81.45 -10.96' LT	1100.830	LIP
104	N=171489.3081 E=601302.1307	10+86.45 -13.63' LT	1100.720	TBC
105	N=171487.6435 E=601300.0431	10+86.45 -10.96' LT	1100.733	LIP
106	N=171485.3989 E=601305.2480	10+91.45 -13.63' LT	1100.920	TBC
107	N=171483.7343 E=601303.1604	10+91.45 -10.96' LT	1100.679	LIP
108	N=171478.9453 E=601315.8586	11+03.11 -17.90' LT	1100.481	TBC
109	N=171476.8082 E=601314.5614	11+03.97 -15.55' LT	1100.517	LIP
110	N=171472.4917 E=601326.4692	11+14.77 -22.17' LT	1100.560	TBC
111	N=171470.8290 E=601324.6906	11+14.96 -19.74' LT	1100.373	LIP



Point Table				
POINT#	NORTHING/EASTING	STATION/OFFSET	ELEVATION	DESCRIPTION
112	N=171494.2754 E=601254.9112	10+53.12 20.19' RT	1101.245	LIP
113	N=171492.8079 E=601253.0702	10+53.12 22.54' RT	1101.464	TBC
114	N=171488.1199 E=601265.7893	10+64.72 15.52' RT	1101.129	LIP
115	N=171486.0183 E=601264.5504	10+65.59 17.80' RT	1101.312	TBC
116	N=171482.1571 E=601276.3265	10+75.95 11.00' RT	1101.017	LIP
117	N=171480.1087 E=601274.5448	10+76.44 13.67' RT	1101.250	TBC
118	N=171477.8632 E=601279.7493	10+81.44 11.00' RT	1100.940	LIP
119	N=171476.1989 E=601277.6614	10+81.44 13.67' RT	1100.900	TBC
120	N=171473.9534 E=601282.8659	10+86.44 11.01' RT	1100.883	LIP
121	N=171472.2891 E=601280.7780	10+86.44 13.68' RT	1100.840	TBC
122	N=171469.6567 E=601286.2909	10+91.94 11.01' RT	1100.818	LIP
123	N=171468.3793 E=601283.8947	10+91.44 13.68' RT	1101.070	TBC
124	N=171458.1381 E=601289.6880	11+03.06 15.54' RT	1100.640	LIP
125	N=171457.4072 E=601287.3675	11+02.18 17.80' RT	1100.616	TBC
126	N=171446.2492 E=601293.1942	11+14.54 20.21' RT	1100.457	LIP
127	N=171444.7963 E=601291.3590	11+14.53 22.55' RT	1100.619	TBC

#4472

#4464

MANOR PARK DR NW

NOTES:

- CITY OF ROCHESTER STREET MAINTENANCE WILL PERFORM BITUMINOUS RESTORATION. CONTRACTOR IS RESPONSIBLE TO GRADE AND COMPACT THE 8" CLASS 5 AGGREGATE BASE TO THE BOTTOM OF EXISTING PAVEMENT.
- CITY OF ROCHESTER INFRASTRUCTURE MAINTENANCE WILL INSPECT ALL CATCH BASINS TO CONFIRM CONDITION AND CASTING PLACEMENT PRIOR TO INSTALLING NEW CURB AND GUTTER.
- INSTALL PEDESTRIAN RAMP PER MnDOT 5-297-250 ON PAGES 4-9.

Revision comment: ...
Revised: ...

I hereby certify that this plan was prepared by me or under my direct supervision and that I am a duly Licensed Professional Engineer under the laws of the State of Minnesota.
K. Alan Bug
Date: 7/18/22 Lic. No. 55322

4001 W River Parkway NW - Suite 100
Rochester, MN 55901
www.rochestermn.gov/departments-public-works
Phone: (507) 336-2400 FAX: (507) 338-2401

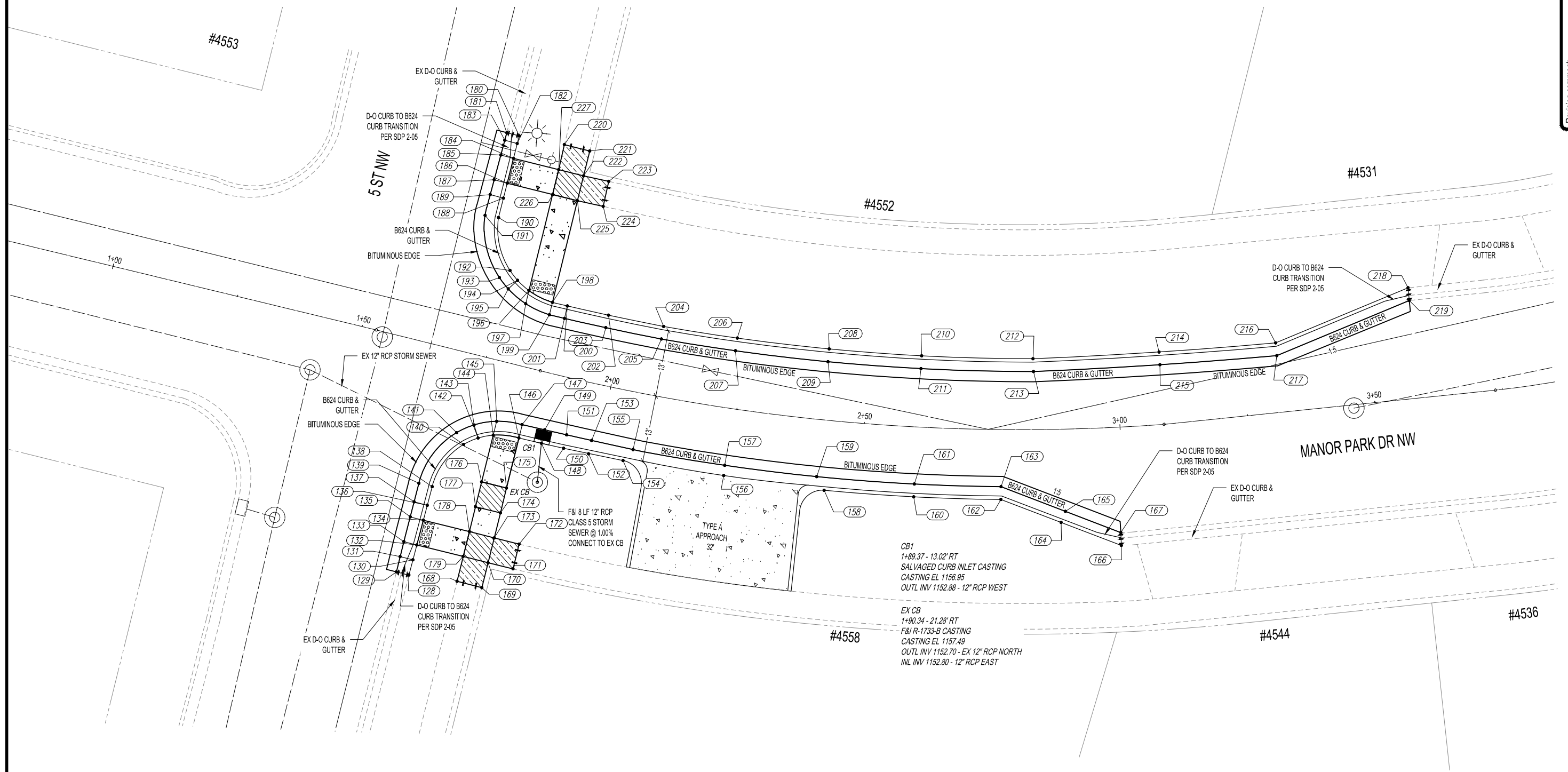
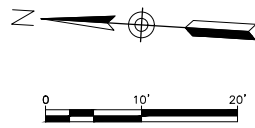


GRADING
MANOR PARK DR NW / 3 ST NW TRAFFIC CALMING
SITES 3 & 4

Designer: DJK
Checker: SOB

Fed. Project No.
S.A.P. No.
City Job# J8208
Sheet 15 of 22 Sheets

SITE 4



- NOTES:**
1. CITY OF ROCHESTER STREET MAINTENANCE WILL PERFORM BITUMINOUS RESTORATION. CONTRACTOR IS RESPONSIBLE TO GRADE AND COMPACT THE 8" CLASS 5 AGGREGATE BASE TO THE BOTTOM OF EXISTING PAVEMENT.
 2. CITY OF ROCHESTER INFRASTRUCTURE MAINTENANCE WILL INSPECT ALL CATCH BASINS TO CONFIRM CONDITION AND CASTING PLACEMENT PRIOR TO INSTALLING NEW CURB AND GUTTER.
 3. INSTALL PEDESTRIAN RAMPS PER MNDOT 5-297-250 ON PAGES 4-9.

Revision comment: ...
 Revised: ...
 I hereby certify that this plan was prepared by me or under my direct supervision and that I am a duly Licensed Professional Engineer under the laws of the State of Minnesota.
 X *John Bug*
 Date: 7/18/22 Lic. No. 55322

401 W River Parkway NW - Suite 100
 Rochester, MN 55901
 www.rochesterengineeringpublicworks.com
 Phone: (507) 338-2400 FAX: (507) 338-2401

ROCHESTER PUBLIC WORKS MINNESOTA

GRADING
 MANOR PARK DR NW / 3 ST NW TRAFFIC CALMING
 SITE 4

Designer: DJK
 Checker: SOB

Fed. Project No.
 S.A.P. No.
 City Job# J8208
 Sheet 16 of 22 Sheets