



# Master Plan Update

---

**Soldiers Memorial Field Park**  
**Rochester, MN**



# Soldiers Memorial Field Park



# Soldiers Memorial Field Park

## Adopted Master Plan



# SOLDIER'S FIELD MEMORIAL PARK

## INTRODUCTION

### PROJECT PURPOSE

Over the last five years the City of Rochester has nearly finished implementing the interim recommendations from the 2014 Master Plan.

» *The plan update process will confirm the long-term (10 to 20 year) vision for the park and identify new strategies to achieve the vision.*

In 2020 the City approved a referendum for park investment. The City has targeted \$7 million of the referendum, plus any grant funding received, to Soldiers Field to implement recommended improvements from the Park System Plan and priorities identified through this planning process. Improvements will likely include, but are not limited to aquatics, playground, shelters, and trails. Currently there are no funds target to converting the golf course

» *The Master Plan will direct what improvements will be made with this funding in the next 5 years, and what improvements should be considered when funding is available in 10 to 15 years.*

### PROJECT SCHEDULE



### GUIDING PRINCIPLES

A set of guidelines were developed to help shape the discussion and design ideas proposed for Soldier's Field. These guiding principles were initially developed during the 2014 Master Planning process and were confirmed through stakeholders and community input for this Master Plan Update.

1. Preserve the park and the park boundary from future encroachment
2. Provide a welcoming and inclusive park for a growing and diverse community
3. Provide a variety of outdoor park spaces and programs, including opportunities for non-programed recreation
4. Preserve the intent of the memorial areas
5. Address community needs for park evolution while incorporating historic design elements
6. Strengthen park access and connections to downtown and other surrounding neighborhoods
7. Provide trails and gathering spaces that engage park users with the river
8. Enhance the signage and way-finding system to orient and direct park users
9. Provide opportunities for winter use
10. Incorporate sustainable design practices
11. Consider life-cycle costs as well as capital costs for park improvements



# Soldiers Field Existing Status

# Soldiers Memorial Field Park

- Several planning efforts have occurred
- Park size is 147 acres
- Golf Course area is over 100 acres
- Existing Park Amenities
  - Trails
  - Golf
  - Tennis
  - 2 Ball Diamonds
  - Athletic Field
  - Playgrounds
  - Various Gardens/Memorial



# Master Plan Adoption

- Plan was adopted in 2014
- Subcommittee met through 2015 to develop priority low cost improvements
- Focused on north ½ of the Park
- Implementation plan 2016 - 2021



# Soldiers Memorial Field Park Improvements Made

- Winter Skating Added – Track and Rinks
- Event space improvements – Electric, vehicle access
- Track improvements – running and event
- Parking resurfacing
- Closed Gibbs Drive
- Changed Parking times
- Removed West Ball Field
- Tennis Practice resurfaced
- Winter decorations
- Gated access points
- LEM landscaping started.





# Completed Projects From SF Master Plan Since 2015







# Master Plan Engagement

## Community Engagement Phase 1

### Framework for Community Engagement

To understand current needs and desires of the community and surrounding neighborhoods, engagement opportunities were used to involve residents, visitors, and stakeholders in reviewing the project's guiding principles, elements from the 2014 Master Plan, and ideas and concerns for both current and future programming.

Overall, the effort was successful in generating over 1,700 comments. This input was evaluated by the project team and City staff and used to inform the planning process and, ultimately, the final plan included in this Master Plan Update.

### Project Schedule

The graphic below outlines the project schedule and strategy for the community engagement, concept development and refinement, and plan approvals for the Soldier's Field Master Plan Update.



### Phase 1 Community Engagement Overview

From December 2021 through February 2022, the project team and City staff led a series of community engagement activities to gain insight on how community members currently use the park, identify possible needs or gaps in service, and seek input on potential activities and programs that could be included in the Master Plan Update.

Throughout the engagement, several special interest groups had strong participation in the outreach and led an organized effort in providing feedback. In particular, it should be noted that a number of comments were received in the online survey and Social Pinpoint interactive map regarding the golf course. Concurrent discussions in City Council about the city-wide Golf Study at the time of the outreach drew a lot of attention from golf club members. This contributed to a high level of participation in the Soldiers Field engagement efforts, and may not reflect the opinions and attitudes of residents and visitors as a whole.

### Stakeholder Meetings

City staff met with representatives from local organizations and user groups to discuss how participants currently use the park, identify needs or gaps in service, and have a conversation about participants' vision for Soldier's Field. Notes from these meetings are included in the Appendix.

### Community Online Survey

A survey was hosted through Polco, the City's platform for online community engagement. The survey was advertised to residents and visitors on the City's website as well as by word of mouth through the Stakeholders' networks. Respondents were asked about when and how they typically use the park, and what would make their experience more enjoyable. Over 1,600 responses were collected. The full survey results are included in the Appendix.

### Online Interactive Map

Social Pinpoint, an interactive mapping tool, was paired with the online survey to collect comments about the park keyed to specific locations on a map. These pinned comments identified what the community likes and dislikes about the park's existing conditions, as well as opportunities and concerns for the park's future development. A full record of the map's comments is included in the Appendix.



## Stakeholder Meeting Summaries

Between January and February 2022, City Staff hosted 12 stakeholder meetings with various local organizations, user groups, and special interest groups. A presentation that overviewed current project vision and goals, other on-going planning efforts, project schedule, and public engagement plan was presented to participants for background. A summary of the 2014 Master Plan proposed improvements was included, as well as tasks that have been completed so far, and stakeholders were asked for their feedback on what remaining improvements were still important to consider and what new ideas should be explored.

### Meeting Summaries

The following comments represent the primary topics brought forward by participants in the stakeholder meetings.

#### Facilities

- Expand pool facility to improve accessibility; update bathroom; provide indoor, year-round use
- Reconfigure current warming house to accommodate winter use.
- Incorporate a restaurant into the Clubhouse to draw people to the park.
- Add facilities to serve the west side of the park, including a restroom and picnic pavilion. Add parking to support this side of the park.
- Integrate accessibility improvements into all new/retrofitted facilities.
- Improve park wayfinding and signage.

#### Park Program

- Make inclusivity and accessibility a priority of park programs and facilities.
- Add dedicated pickleball courts to existing tennis courts. Expansion of tennis is not necessary.
- Prioritize flexibility of park spaces and programs in order to accommodate multiple uses and activities.
- Introduce more all-season activities in order to address desire for year-round use of the park.
- Add space for user or event equipment storage.
- Understand that the existing lighted facilities are a huge asset to the park.

#### Trails

- Widen trails to accommodate multiple uses, or separate trails for different user types.
- Consider circuit-training or fitness trails.
- Improve circulation within the park; area near track and pool is a bottleneck.
- Add more trail connections to surrounding neighborhoods/paths of travel and improve connections to river.
- Remove Gibbs Drive to create more green space.

#### Events & Partnerships

- Partner with the Library and other organizations for youth programming.
- Partner with surrounding apartment buildings on park programming and activities.
- Activate areas of the park that are under-utilized.
- Introduce more spaces for gathering, like pavilions, picnic areas, gazebos, or outdoor classrooms. Create a central "heart" for gathering at Soldier's Field.
- Connect with the Master Gardener program.

#### Environmental

- Provide more opportunities for shade (with seating).
- Increase native plantings and pollinator habitat. Take advantage of the many grants available for environmental improvements.
- Add an arboretum or botanical garden.

## Participation

The following is a list of the groups that were invited to attend stakeholder meetings.

- Downtown Neighborhood Association
- Historic SW Neighborhood Association
- Parkway Neighborhood Association
- R Neighbors
- Rochester Running Club
- Lil Sluggers
- Rochester Youth Basketball Association
- Rochester Tennis Connection
- YMCA
- Rochester Art Center
- University of Minnesota Rochester
- Destination Medical Center Economic Development Agency
- Rochester Downtown Alliance
- Rochester Public Library
- We Bike Rochester
- Pedestrian and Bicycle Advisory Committee
- Southeastern Minnesota Center for Independent Living (SEMICIL)
- ExercisABILITIES
- RT Autism Awareness
- Special Olympics
- AccessABLE Recreation
- Law Enforcement Memorial of Southeast Minnesota Representative
- Soldiers Field Veterans Memorial Committee
- Rochester Garden Club
- Diversity Council
- Pamoja
- Barbershop Social Services
- Intercultural Mutual Assistance Association
- Out Rochester
- City of Rochester Director of Diversity, Equity, and Inclusion
- Men's Golf
- Men's Senior Golf
- Women's Golf
- Experience Rochester
- Rochesterfest
- Rochester Swim Club
- City of Rochester Park and Recreation Staff
- Community Mobilization Resource Coalition
  - Rochester Public Schools
  - Olmsted County
  - Mayo Clinic
  - Legal Assistance of Olmsted County
  - Unidos MN
  - Emmright Business Management and Consulting



## Community Survey Summary

An online community survey was launched at the end of December 2021 and was open until January 18th, 2022. This survey contained eight questions intended to help understand current users and user habits, programming desires, and thoughts on the project's Guiding Principles. An additional nine questions were asked at the end of the survey to understand the demographics of the participants. The survey was designed to take ten minutes to complete.

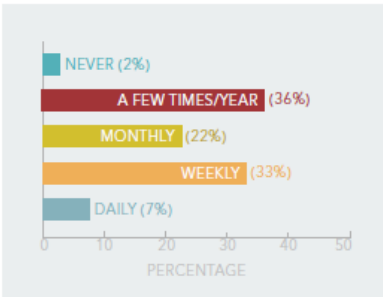
### Participation

Over the 4 weeks that the survey was open, 1,560 responses were collected. The survey was advertised through the project website, social media accounts of the Parks and Recreation Department, and through Stakeholder Groups' networks.

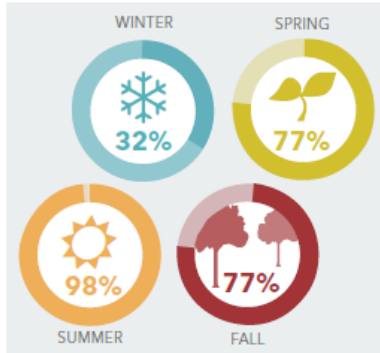
### Survey Results

The following is a summary of questions asked and responses gathered through the community survey. All questions were optional.

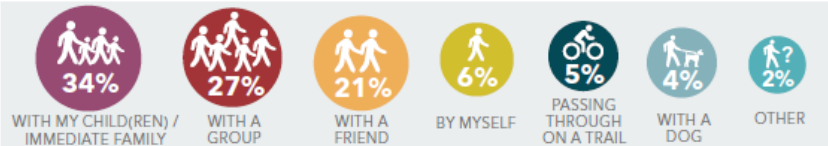
#### HOW FREQUENTLY DO YOU TYPICALLY VISIT SOLDIERS FIELD MEMORIAL PARK?



#### PLEASE CHECK IN WHICH SEASONS YOU VISIT SOLDIERS FIELD MEMORIAL PARK (SELECT ALL THAT APPLY)



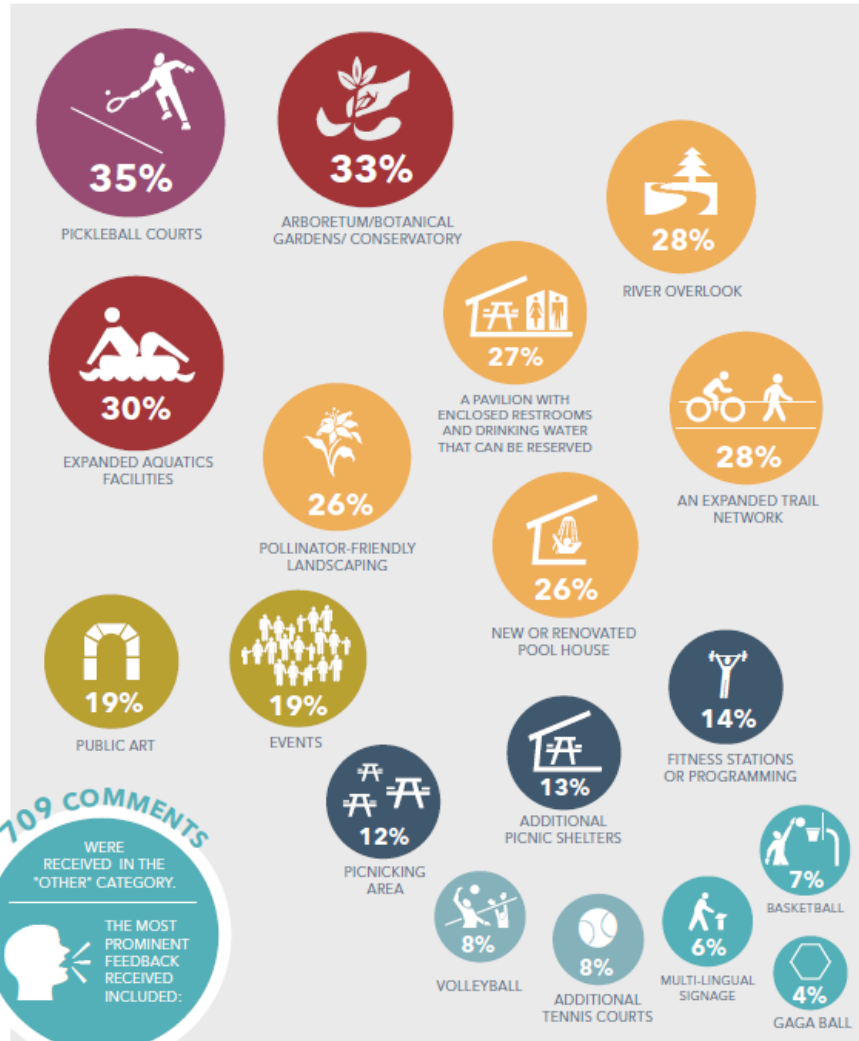
#### WHO DO YOU TYPICALLY SPEND YOUR TIME AT SOLDIERS FIELD MEMORIAL PARK WITH?



#### IN THE LAST 12 MONTHS, WHAT FACILITIES HAVE YOU USED AT SOLDIERS FIELD MEMORIAL PARK? (SELECT ALL THAT APPLY)

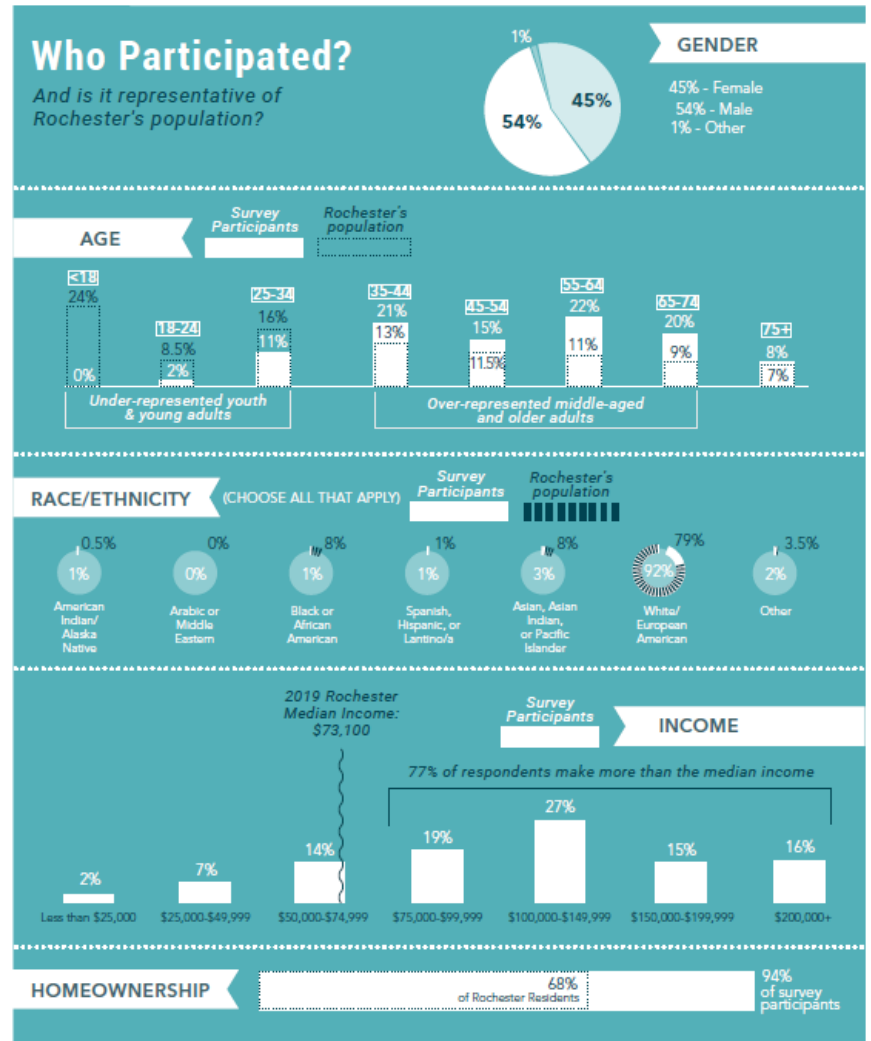


**WHAT NEW FACILITIES OR AMENITIES WOULD MAKE YOUR EXPERIENCE MORE ENJOYABLE?**  
(SELECT ALL THAT APPLY)



**709 COMMENTS**  
WERE RECEIVED IN THE "OTHER" CATEGORY.  
THE MOST PROMINENT FEEDBACK RECEIVED INCLUDED:

- 165** (11% of 1,560) KEEP OR IMPROVE THE GOLF COURSE
- 101** (6% of 1,560) AQUATICS IMPROVEMENTS ARE ESSENTIAL
- 85** (5% of 1,560) IMPROVE THE CLUBHOUSE AND ADD FOOD AND BEVERAGE OPTIONS
- 63** (4% of 1,560) ADD A CURLING FACILITY AT THE PARK



## Interactive Map Comments Summary

Social Pinpoint is an interactive mapping tool that allows participants to provide comments directly on a map. Visitors to the website can also view, comment, and like/dislike comments left by others on the map. Participants are encouraged to use color-coded markers to indicate whether comments are ideas, concerns, or relate to another topic. The tool was launched alongside the Polco Community Survey in December 2021 and was open for comment through January 2022.

### Participation

The site had over 800 unique visitors and 168 comments were left on the map; with the largest proportion (39%) being comments that supported ideas proposed in the 2014 Master Plan.

### Mapping Results

The Social Pinpoint map and map comments (below) illustrate a sampling of the feedback received through the interactive map. A full summary of common themes and discussions can be found on the following pages.

### Map Comments

- "Renewing historical spaces for current use isn't destroying the past. It is better utilizing spaces to increase enjoyment and participation for a more diverse population. Plus, didn't the course originate as a 9-hole course, with the intention by the American Legion to promote community welfare."
- "Additional tennis courts, with pickle ball lines, would be nice. Especially in the nice times of year the tennis courts are often full and this is the only public facility with lighted courts in the area"
- "Shouldn't change this 18 hole course to a 9 hole course. It is special to the city as historic and the uniqueness of the golf course. One of a kind, it's in the middle of the city, it's fairly easy to walk so more walkers means more exercise/less alternate energy use, a river flows through it, has ample 'shared' parking."
- "This playground area needs permanent toilets and water access. The portable toilets facing the street are really challenging for families to use."
- "Love the track and love ice skating all winter. Please leave in the plan! I would love to see some additional infrastructure to support this such as a warming area, skate rental, and refreshments."
- "This is the area of the park that gets the least use. Perhaps consider adding something new here, such as a botanical garden or river viewing area."
- "I have concerns about the noise associated with pickle ball courts. The current tennis courts are occasionally used for pickle ball and at those times the noise carries far and detracts from the tranquility of the park and neighborhood and the enjoyment of other users of the park."
- "Consider using many native plants along the river bank. This would provide habitat for bees, butterflies and birds, and interest for visitors."
- "Creating a south entrance and adding a walking or biking path from here to the playground and other parks of the park would be great!"
- "Any plans to reduce the golf course should include destination additions, like the arboretum at Como park or a destination water park like the Dells or Des Moines. Otherwise the golf course should be left as is."





## Summary of Comments

Recurring comments or themes from each of the marker categories.

### *Keep this in the Plan:*

- Desire to keep the golf course at 18 holes
- Support for the expanded winter activities, including the ice skating rinks and groomed cross-country ski trails
- Desire for improvements to the pool and bath house facilities
- Support for trail connection at Hwy 14/12th Street SW
- Support for the Southeast Minnesota Law Enforcement Memorial

### *I don't think we need this:*

- Opposition to proposal to reduce the golf course to 9 holes
- Concern about cost of or desire for proposed trail connection at Hwy 14/12th Street SW

### *Here's a New Idea:*

- Pickleball, either as dedicated courts or shared with tennis courts
- Expanded tennis courts
- Permanent restroom facilities at convenient locations throughout the park
- Public art and native planting/pollinator habitat
- Indoor pool facilities

### *I have a Comment:*

- Support for expanded pool facilities, including a splash pad and other water park features for children and families
- Add comfort amenities to improve user experience at the Field of Fun playground (on the west side of the park), including restrooms, more seating, and parking closer to the playground
- Desire for park improvements to consider environmental impacts and water quality
- Reiterated desires for expanded tennis facilities and the addition of pickleball courts
- Support for trail connections to surrounding neighborhoods

### *I have a Concern:*

- Concern about the appropriateness of the Southeast Minnesota Law Enforcement Memorial
- Concern about the noise associated with adding pickleball courts





# Grant Contemplated Projects

Several projects are planned at Soldiers Field to address system wide and park specific deficiencies. All of these projects will have positive economic impacts on a variety of areas within the community.

# Soldiers Memorial Field Park Grant Funding

Park Board and Council have goals for being more fiscally sustainable.

- City Council Foundational Principles Strategic Priorities City Vision - Fiscal Responsibility & Sustainability
- Adopted Park System Plan:
  - Trails - 4.2.5. Initiate planning on priority segments to position projects for grant funding.
  - 1.2. Expand & diversify funding sources: Continue to strategically pursue grants



## Target Projects:

New aquatic facility which includes a lap pool, diving pool, toddler and splash areas. A new bathhouse and locker facilities will also be included.



### 4.3 Key Recommendations

The preferred plan considers the public's stated preference to retain and improve the golf course. Due to declining interest in the sport amongst younger user groups, the plan recommends a phased reduction of the golf course to a 9-hole course, located south of the river. The future grounds will be improved and will include water features, of which there is some historical precedent. The future 9-hole course will also include a new clubhouse and adjacent parking at the south of the park, and should include an enhanced destination restaurant within it.

The Veteran's Memorial should be preserved and enhanced. It should be the formal entrance to the park. As envisioned when the park was designed, this area should be enhanced through the inclusion of gardens and gathering spaces, knitting it into the rest of the park.

The pool and splash area should be enhanced. There should be a lap pool, a diving pool, and a toddler pool and splash area.

These enhancements should include patio areas, seating, tables, concessions, locker room facilities and showers.

2014 Soldiers Field Master Plan

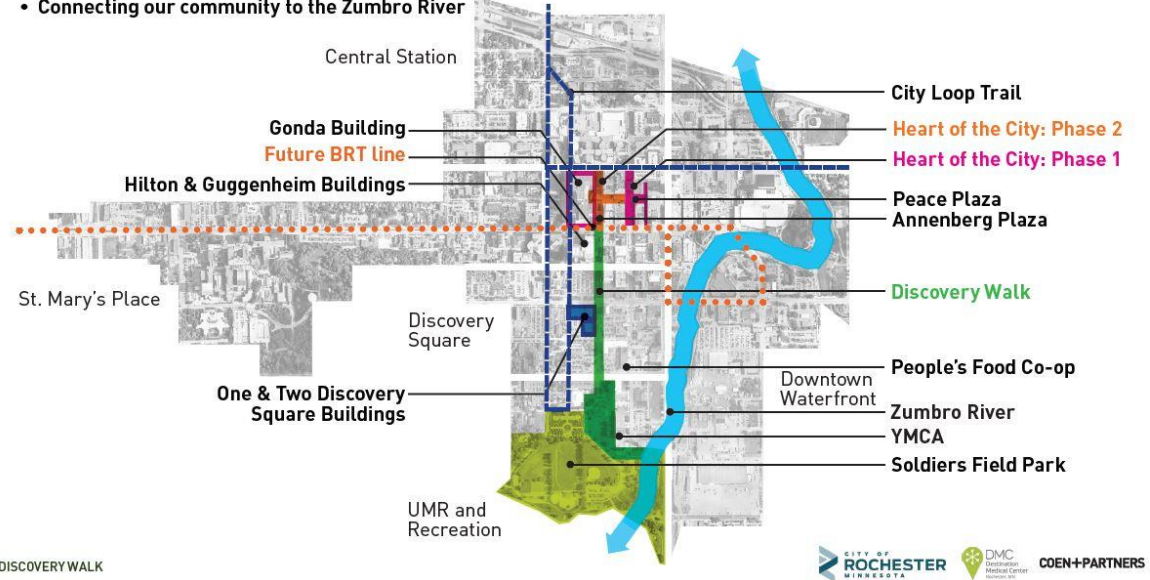


# Target Projects:

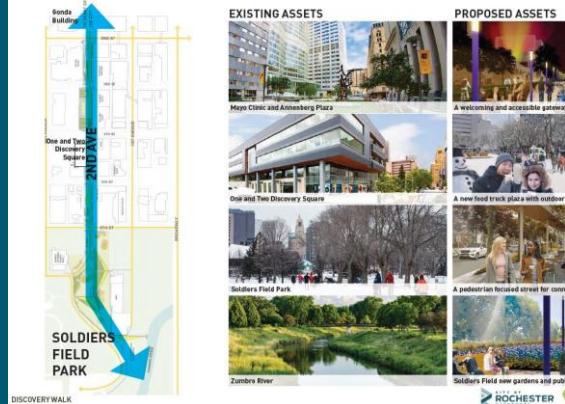
Pedestrian connections to the “Discovery Walk” project which currently terminates at 6<sup>th</sup> Street SW. The pedestrian connection project will continue the walk into Soldiers Field, past the YMCA and south to terminate at a Zumbro River overlook or terracing. This pedestrian route will contain landscaped natural areas, art, and opportunities for informal gathering.

# PLANNING FOR THE FUTURE BY CREATING A CONNECTED CITY!

- Connecting people to the outdoors
- Connecting Mayo and 2nd Street to Soldiers Field
- Connecting people through improved public transportation
- Connecting our community through new pedestrian friendly public spaces
- Connecting our community through a new and improved trail system - City Loop
- Connecting our community to the Zumbro River



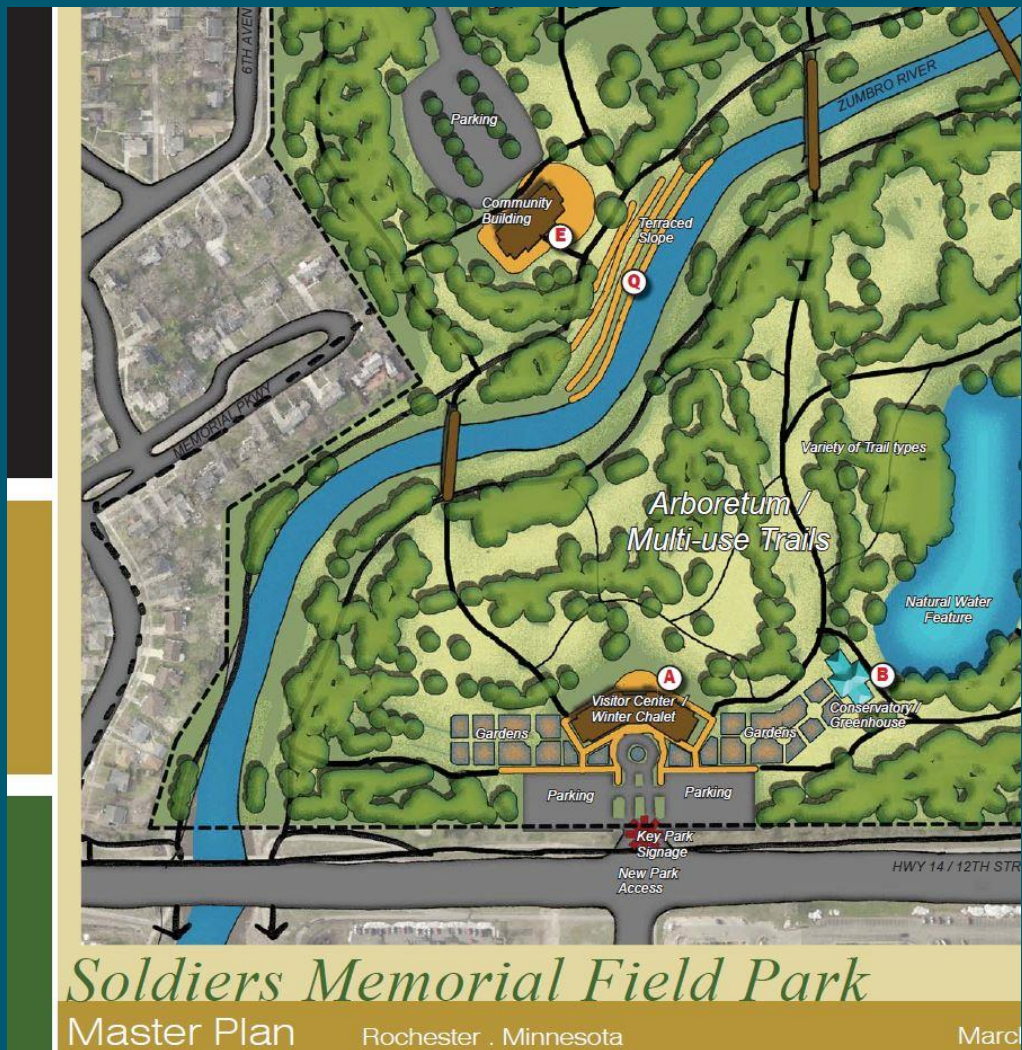
## CONNECTING IT ALL IN A 10 MINUTE WALK.



## CONNECTING DISCOVERY WALK TO SOLDIERS FIELD AND THE ZUMBRO RIVER THROUGH NEW GARDENS AND LOCAL ART INSTALLATIONS.



# Target Projects:



Trail connection to 12<sup>th</sup> Street South: connect roughly 1,500 lineal feet of trail from it's ending at Memorial Parkway SW along the river to the Zumbro South Trail at 12<sup>th</sup> Street SW/Highway 14. This project takes the final leg of the trail off of the public street and creates a direct connection to the larger city-wide trail.

## TRAILS AND OPEN SPACE



## Target Projects:

New Shelter

Inclusive Playground

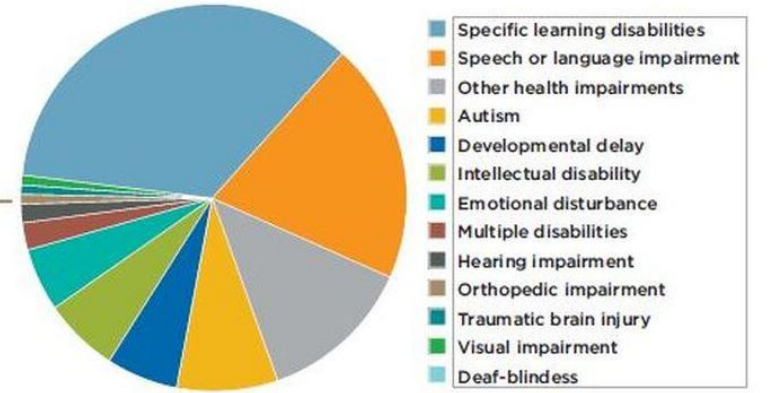


Examples of picnic shelters & small, multi-purpose buildings

### Students with Disabilities

There are many types of disabilities  
The 1% (Orthopedic Impairments) that falls into the ADA target

Source: National Center for Education Statistics, 2019.





# Concept Master Plan Options



# Soldiers Memorial Field Park Golf Optimization

On February 7, 2022, the City Council adopted the **Resolution Accepting the Report from the National Golf Foundation and Approving Further Evaluation of the Rochester Municipal Golf System.**

The resolution outlines three options:

- Maintain existing complement of courses and develop a strategy to fund the recommended \$722,500 per year to support the Capital Improvement Projects and the appropriate level of annual operating support, as well as the cost of additional operations needed (e.g. maintenance staffing, marketing, other service level enhancements) to maintain the complement of courses and better preserve the value of new investment in an improved system.
- Optimize the Rochester Municipal Golf System by repositioning a course and a) evaluate the opportunities and challenges associated with repositioning each, and b) identify high-level future uses for each, and c) assess the long-term financial impact associated with maintaining or repositioning each.
- Maintain the existing complement of courses with the current level of funding and identify service and user experience reductions needed over time.



# CONCEPT 1

SHARE YOUR INPUT!

Scan this QR Code to fill out an online survey!



## KEY ELEMENTS:

The following are key elements of the concept being explored. Please note that funding to implement all of the improvements shown has not been identified. Currently the City has identified \$7 million plus any grant funding received for improvements over the next 5 years. In addition to improvements to aquatics, playground, shelters, and trails, the planning process will identify additional priority improvements.

### Golf

- 18-hole golf course remains – reconfigure holes 2, 3, and 4 for aquatics facility expansion
- Vegetated screening around golf maintenance building

### Aquatics

- Expand aquatics facility to 60,000-70,000 total square feet (roughly double the current size)
- Relocate bathhouse to east side of aquatics facility

### Active Recreation/Sport Courts

- Add 10 pickleball courts
- Remove existing baseball field, to allow for flexible lawn space
- Move winter ice hockey rinks to flex lawn
- Add 2 basketball courts

### Playgrounds

- Remove West playground for new Adventure Playground and kinetic play/fitness circuit area
- East playground remains

### Site Amenities

- Add shared group picnic shelter/pavilion between tennis & pickleball
- Add picnic area near proposed playground with individual shelters
- Add pedestrian promenades on either sides of track for festivals/gatherings & food truck parking
- Replace existing East shelter with group picnic shelter and picnic area

### Parking/Circulation

- Expand east parking
- Shorten Gibbs Drive, add parking lot
- Reopen Gibbs Drive west entry and add small parking lot

## PRECEDENT IMAGERY



Food trucks on promenade



Food trucks on promenade



Picnic lawn with individual shelters



Flexible lawn/event area



Flexible lawn/event area



Pickleball with shared shelter/amenities



Fitness equipment



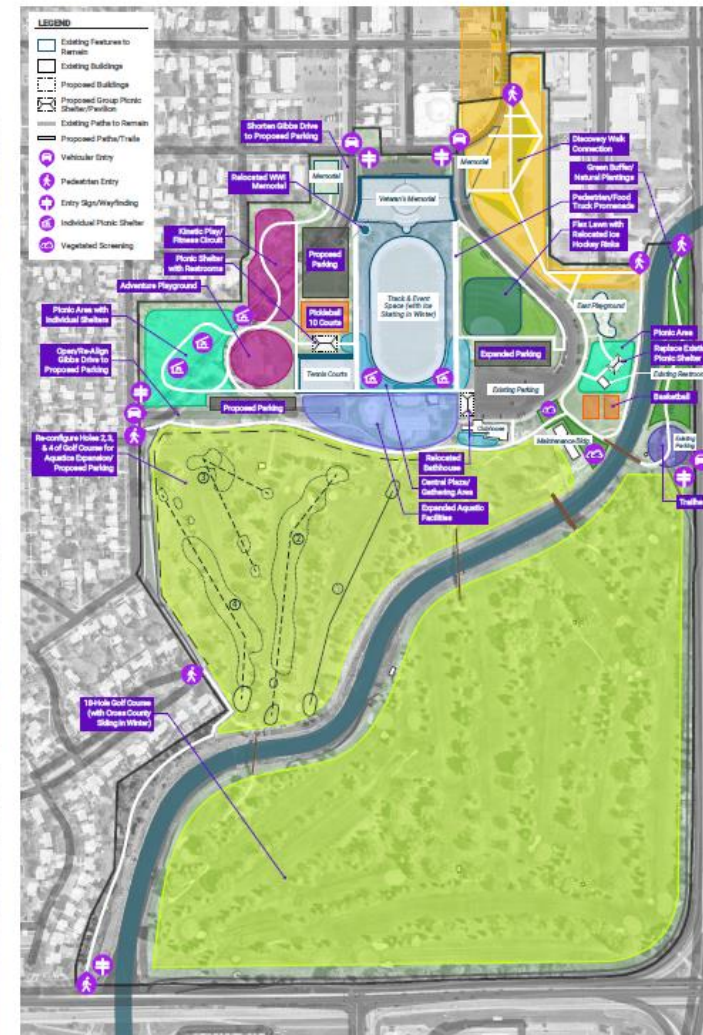
Fitness equipment



Adventure playground



Adventure playground



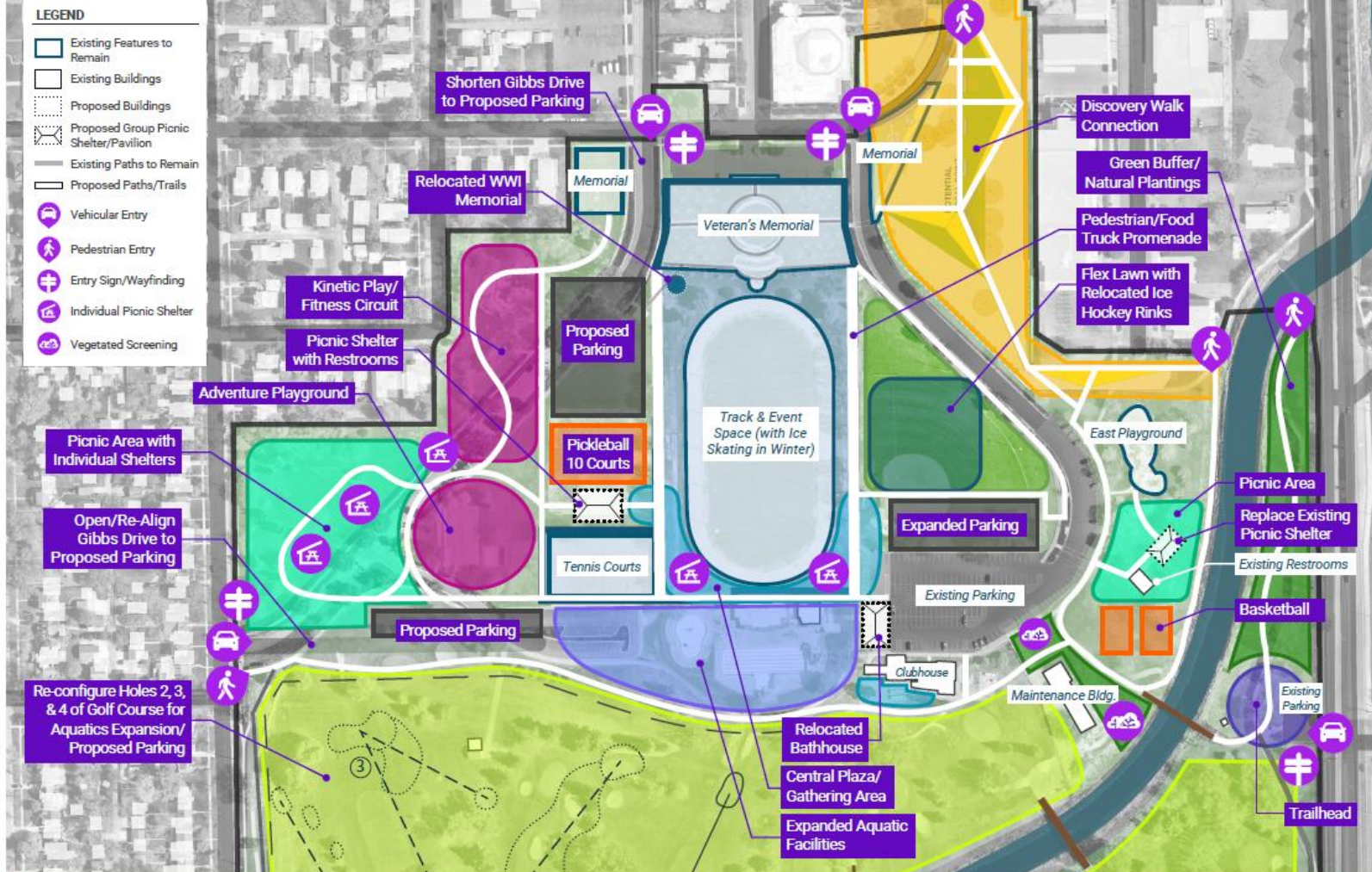
# CONCEPT 1

SHARE YOUR INPUT!

Scan this QR Code to fill out an online survey!



## NORTHERN HALF OF PARK



# CONCEPT 1

## SOUTHERN HALF OF PARK

SHARE YOUR INPUT!

Scan this QR Code to fill out an online survey!



# CONCEPT 2

SHARE YOUR INPUT!

Scan this QR Code to fill out an online survey!



## KEY ELEMENTS:

The following are key elements of the concept being explored. Please note that funding to implement all of the improvements shown has not been identified. Currently the City has identified \$7 million plus any grant funding received for improvements over the next 5 years. In addition to improvements to aquatics, playground, shelters, and trails, the planning process will identify additional priority improvements. Currently there are not funds for converting the golf course.

### Golf

- Reduce golf course to 9 holes, reconfigure holes 8, 13, 15, and 18
- Relocate golf practice area & maintenance building
- Add golf Putting Course

### Aquatics

- Expand aquatics facility to 70,000-80,000 total square feet (roughly double the current size)
- Potential to expand additional 30,000-40,000 square feet as a separate project in the future

### Active Recreation/Sport Courts

- Add 10 pickleball courts
- Add 2 basketball courts

### Playgrounds

- West playground remains
- Add Nature-Themed playground
- East playground remains

### Site Amenities

- Add indoor curling facility & restaurant addition onto existing clubhouse
- Outdoor curling/lawn bowling
- Riverfront Plaza & overlook
- Great Lawn (for events, picnicking, etc.) with trails & picnic shelters
- Arboretum/botanical gardens with trails + interpretation, picnic shelters, and small parking lot off of Highway 14
- Add East group picnic shelter building with restrooms

### Parking/Circulation

- Add small parking area near West playground
- Expand West Parking
- Expand East Parking

## PRECEDENT IMAGERY



Arboretum with trails



Arboretum with trails



Putting course



Botanical gardens



River overlook



Great lawn



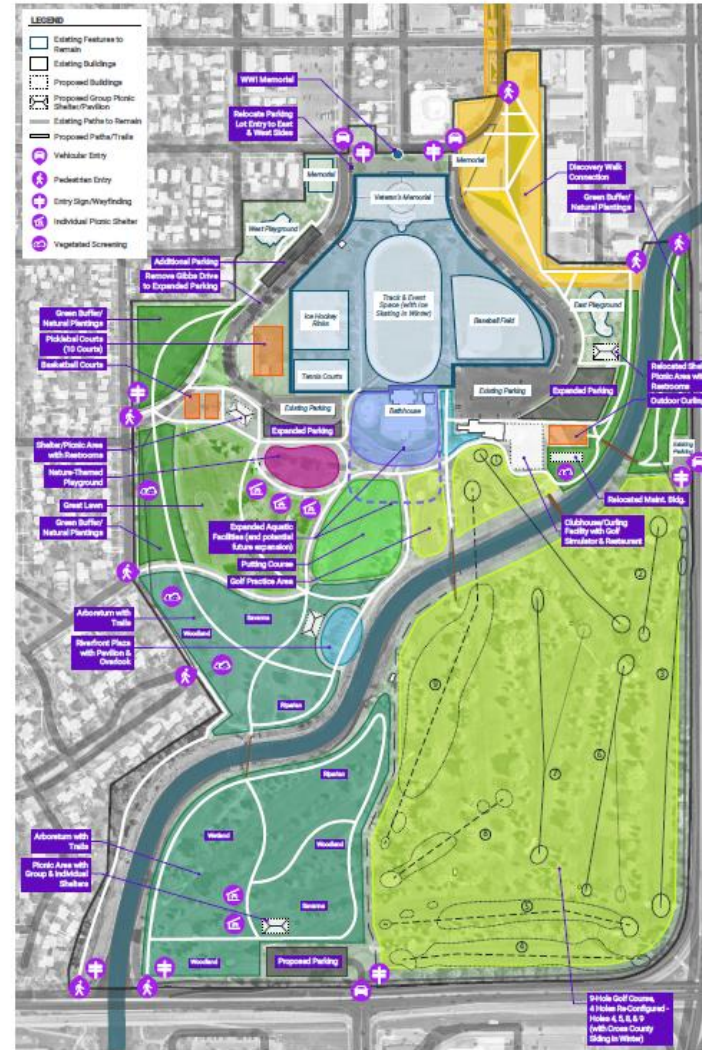
Great lawn



Nature-themed playground



Nature-themed playground



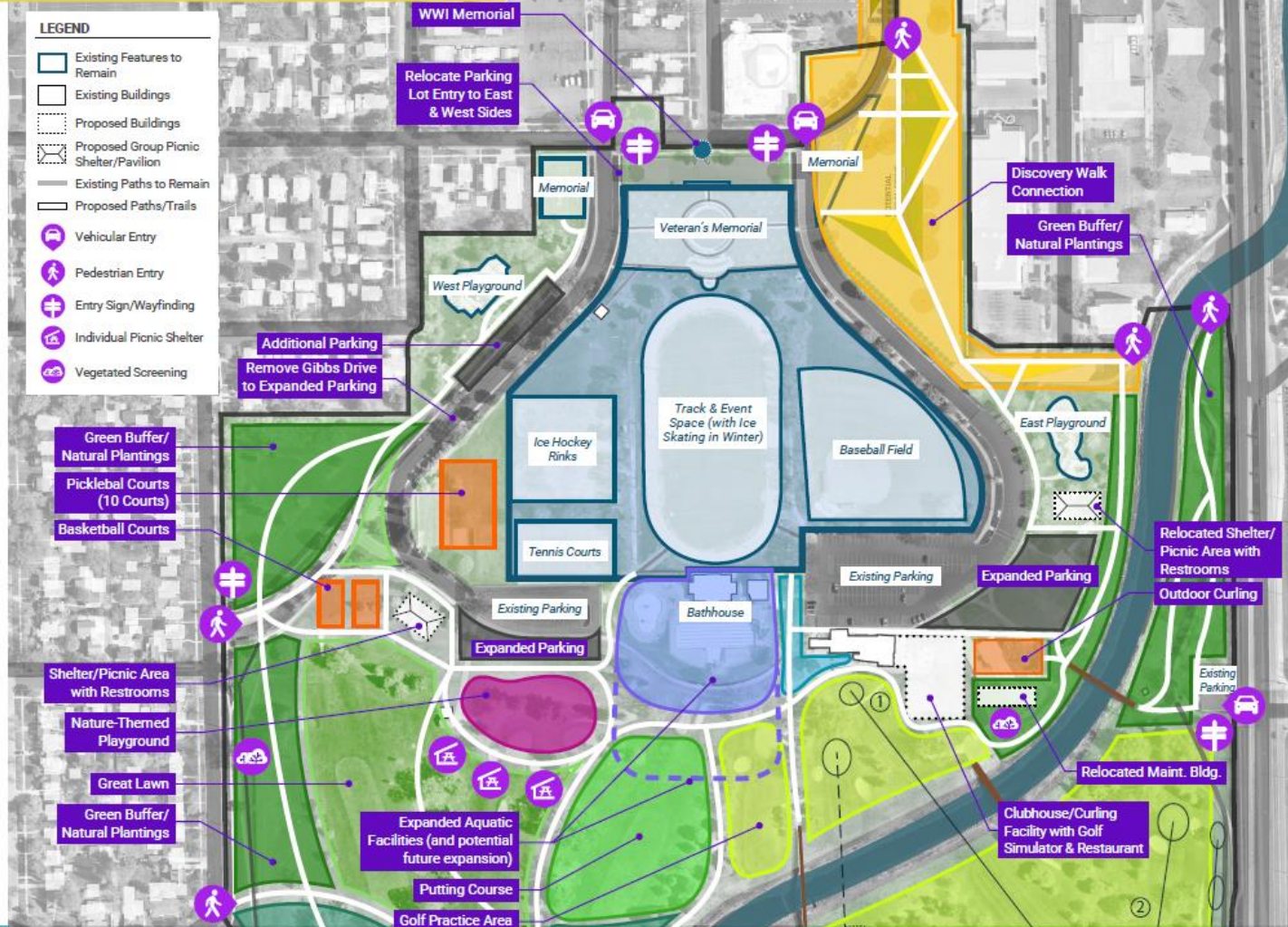
# CONCEPT 2

SHARE YOUR INPUT!

Scan this QR Code to fill out an online survey!



## NORTHERN HALF OF PARK



# CONCEPT 2

SHARE YOUR INPUT!

Scan this QR Code to fill out an online survey!



## SOUTHERN HALF OF PARK



# CONCEPT 3

SHARE YOUR INPUT!

Scan this QR Code to fill out an online survey!



## KEY ELEMENTS:

The following are key elements of the concept being explored. Please note that funding to implement all of the improvements shown has not been identified. Currently the City has identified \$7 million plus any grant funding received for improvements over the next 5 years. In addition to improvements to aquatics, playground, shelters, and trails, the planning process will identify additional priority improvements. Currently there are no funds for converting the golf course.

- Golf**
  - Remove golf course, clubhouse, & maintenance building
- Aquatics**
  - Expand aquatics facility to 70,000-80,000 total square feet (roughly double the current size)
- Active Recreation/Sport Courts**
  - Add 12 pickleball courts
  - Add 3 basketball courts
  - Add bocce ball & volleyball courts
  - Relocate baseball stadium to southern portion of site
- Playgrounds**
  - Remove West playground for new Playground with Sensory Play
  - East playground remains
- Site Amenities**
  - 3 picnic areas with group and individual picnic shelters with restrooms
  - Riverfront plaza with boardwalk/overlook & proposed bridge crossing
  - Flex lawn (hammocking, frisbee, etc.)
  - Indoor curling facility with restaurant
  - Outdoor curling facility/lawn bowling
  - Arboretum with trails + interpretation
  - Relocated ice hockey rinks with ice track/walking path
  - Great lawn (for events, cricket, etc.)
  - Sculpture gardens
  - Vegetated buffer around south park perimeter for screening
- Parking/Circulation**
  - Expand West Parking
  - Expand East Parking
  - Proposed parking lot for restaurant/ curling, baseball, and cricket area off of Highway 14
  - Expanded parking lot off Broadway Ave

## PRECEDENT IMAGERY



Bridge overlook



River terrace



Arboretum with trails



Playground with sensory play



Playground with sensory play



Lawn bowling



Flex lawn



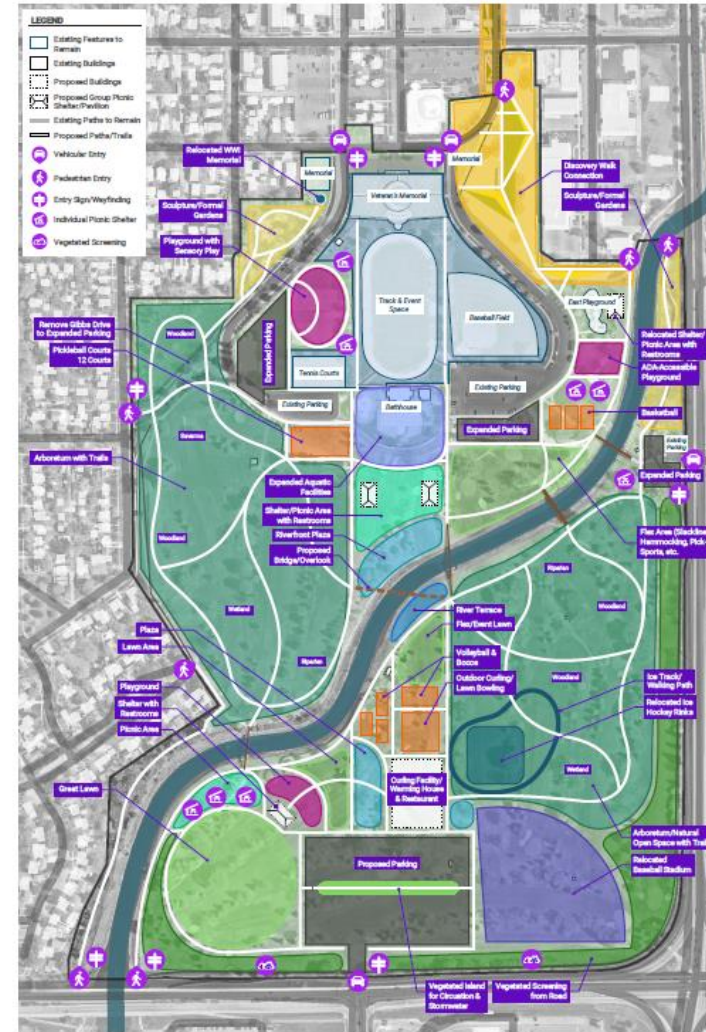
Great lawn



Ice track



Outdoor curling





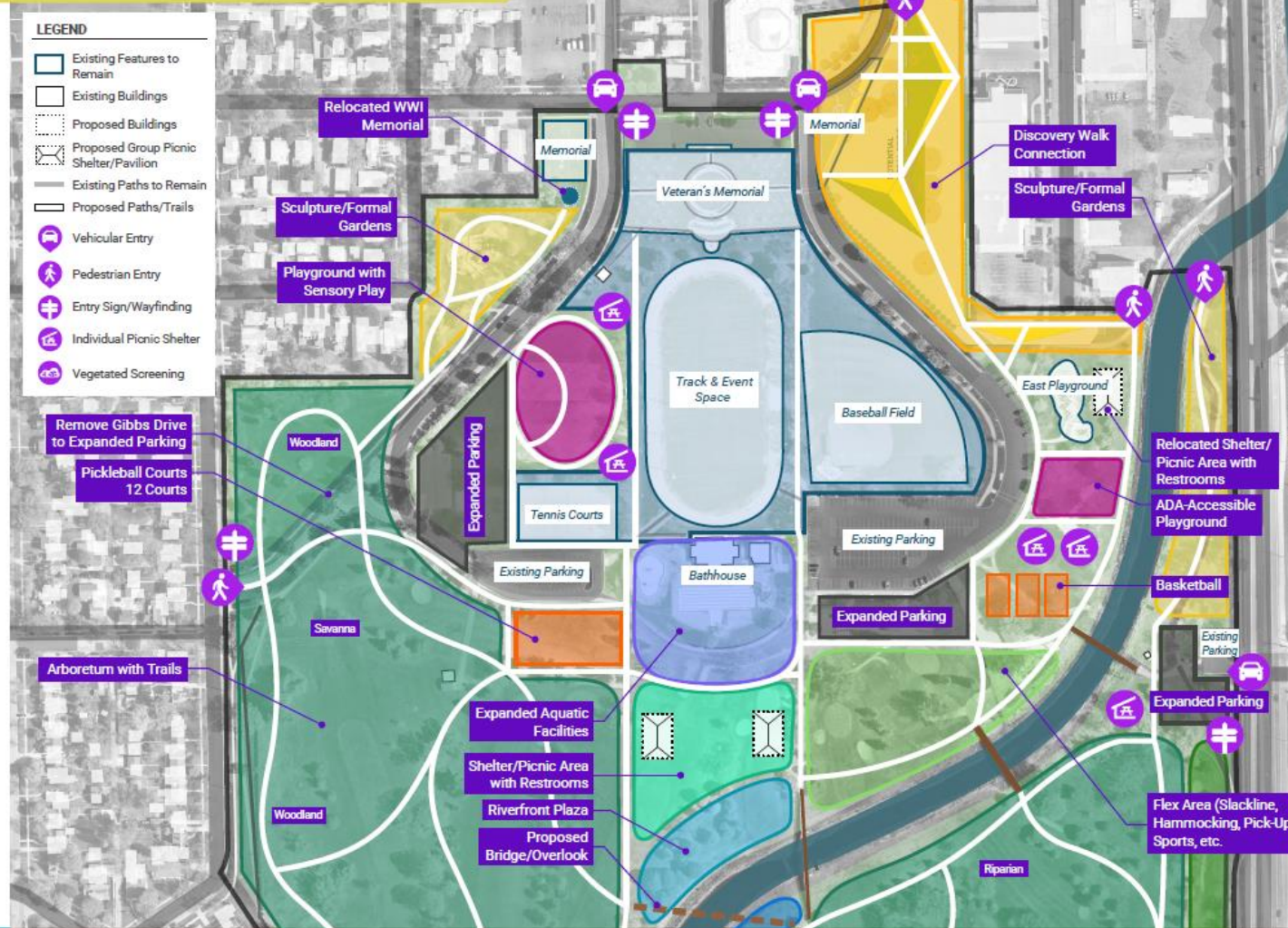
# CONCEPT 3

SHARE YOUR INPUT!

Scan this QR Code to fill out an online survey!



## NORTHERN HALF OF PARK



# CONCEPT 3

SHARE YOUR INPUT!

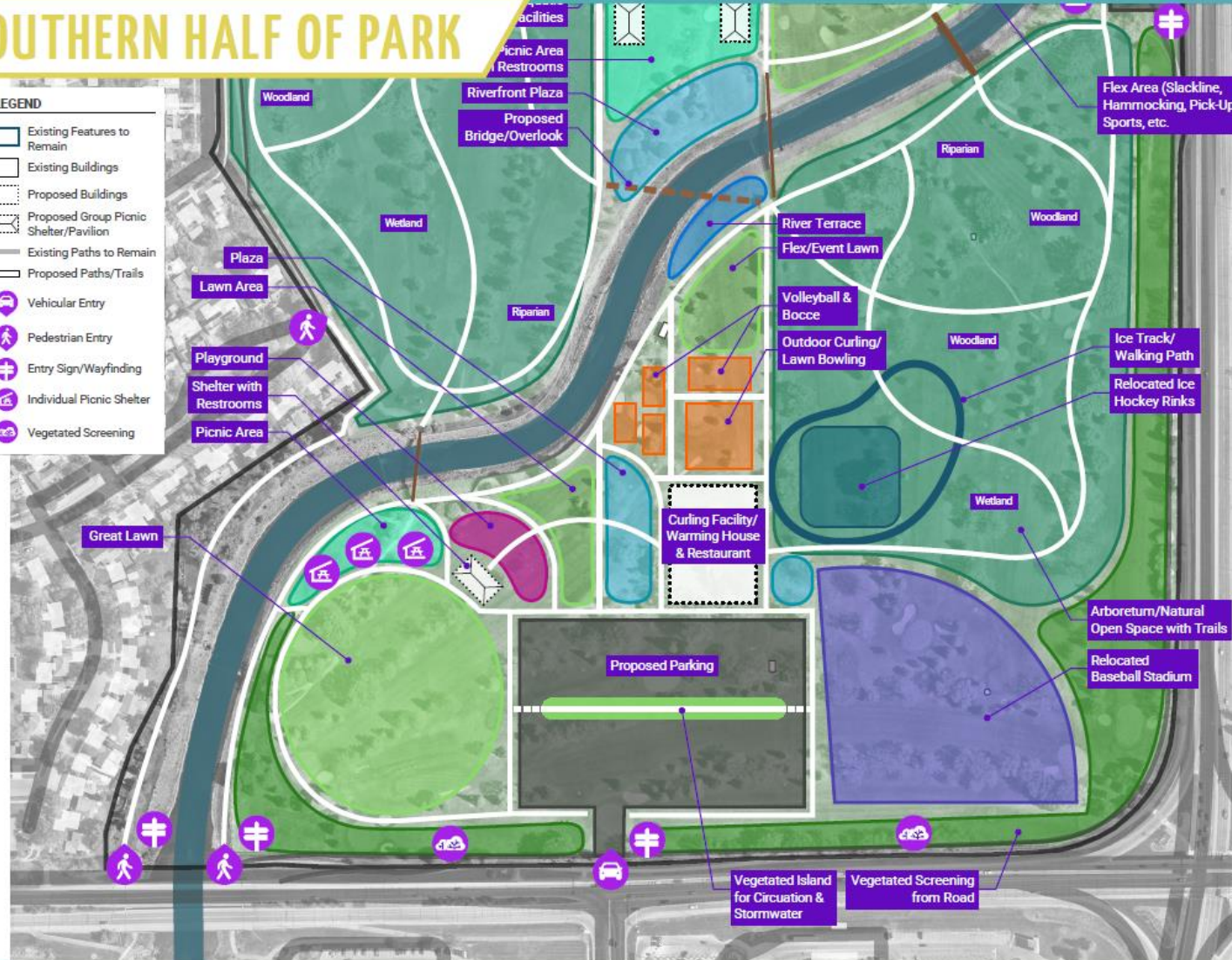
Scan this QR Code to fill out an online survey!



## SOUTHERN HALF OF PARK

### LEGEND

- Existing Features to Remain
- Existing Buildings
- Proposed Buildings
- Proposed Group Picnic Shelter/Pavilion
- Existing Paths to Remain
- Proposed Paths/Trails
- Vehicular Entry
- Pedestrian Entry
- Entry Sign/Wayfinding
- Individual Picnic Shelter
- Vegetated Screening



# AQUATICS FACILITY EXPANSION

SHARE YOUR INPUT!

Scan this QR Code to fill out an online survey!



## POTENTIAL FEATURES

An expanded aquatics facility was one of the most requested features throughout public engagement. The lap pool has reached the end of its useful life and needs to be replaced. The bathhouse requires renovations in order to better serve visitors. In addition to these investments, there may be funds available to improve the splash pad and/or add new features, like a shallow play pool, lazy river, or diving pool. Help us determine what's most desired by marking your highest priority with a green dot. Put red dots next to things you don't think are needed.

### EXPANDED SPLASH PAD

Playable Fountain Jets

Bucket Dump Tower

Water Arches

Water Blasters

Rain Shower Tower

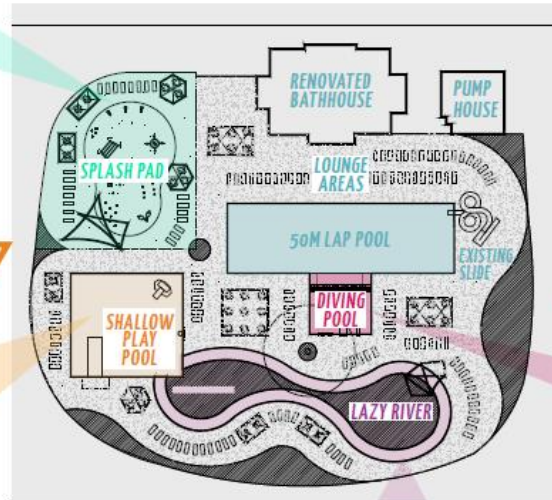


THE CITY MAY HAVE TO PHASE THE AQUATICS EXPANSION.

WOULD YOU PREFER A SPLASH PAD, SHALLOW PLAY POOL, LAZY RIVER, OR DIVING POOL?

PLACE A GREEN DOT NEXT TO YOUR FIRST PRIORITY.

### EXAMPLE LAYOUT



### PLANNED INVESTMENTS

50m Lap Pool (replace)

Existing Slide (keep)

Bathhouse (renovate)

Rental Pavilions

Shade Structures

Lounges



### SHALLOW PLAY POOL (0'-4')

Zero-depth Entry

Splash Jets

Toddler Slide

Family Slide

Basketball Hoop

Volleyball Net



### LAZY RIVER (3'-4')

Gentle Current for Flotation

Interior Landscaped Island



### DIVING POOL (4' - 12.5')

Dive Pool

3m Springboard

1m Diving Board

Climbing Wall

Water Walk





**NEXT STEPS**

- Concept Plan Alternatives
- Engagement
  - Public Open House
  - Event Participation – ie Farmer’s Market
  - Polco Survey
  - Interactive Mapping – Online Comments
  - Stakeholder Discussions
- Master Plan Development
  - Engagement - Shared with Public & Stakeholders
- Presentations/Approvals
  - Park Board
  - City Council
- Golf Engagement – Guided by Council Resolution

