

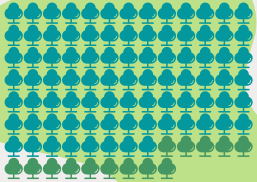
City of Rochester Natural Areas

Results of a woody vegetation survey in Rochester's parkland natural areas

Rochester has 142 public parks and over 5125 acres of public parkland. Nearly 1000 of those acres are made up of natural woodlands. What do those wooded areas look like?

Invasive Species

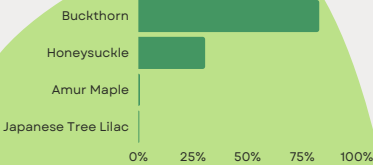
Information was collected at over 270 survey points in parkland woods across Rochester. Invasive shrubs were observed at over 86% of the total surveyed points.



13%

Zero Invasive Species

Only 13% of surveyed points had zero invasive species present.



Occurrences of Invasive Species at Survey Points

Buckthorn and Honeysuckle make up a vast majority of the invasive shrubs surveyed. Buckthorn was present 80% of the surveyed locations and Honeysuckle was at over 30%.

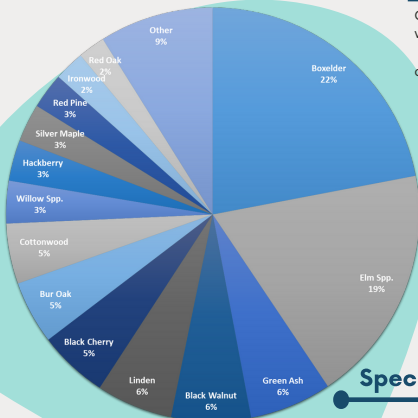
47%

Invasive Species Density

The density of invasive shrubs was calculated at each point for an average total of 47% density among all points.

Woody Species

Over 35 different tree species were observed in City's woods. Boxelder was by far the most common.



Totals Acres Surveyed	671
Total Trees Recorded	1847
Total Trees Estimated	62,585
Average Trees Per Acre	93.1

Species Distribution

Total percent of species estimated

Additional Information

It is estimated that there are over 62,000 mature trees in the surveyed 671 acres. There was a total average of about 93 large trees per acre of natural woodland in Rochester's City Parks.

More Info found:

<https://www.rochestermn.gov/government/departments/parks-and-recreation/forestry/learn-more>