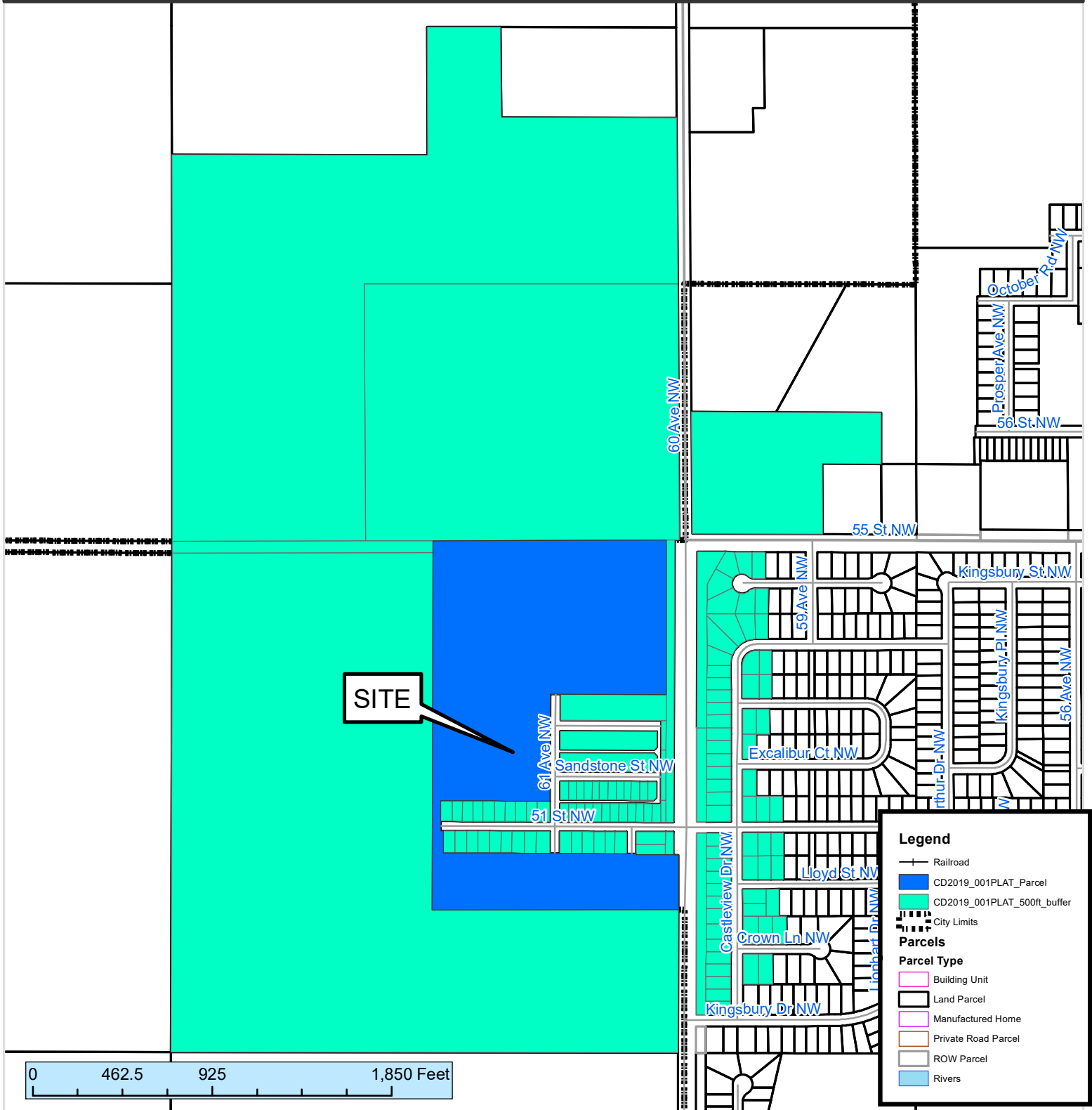


500 ft. Notification Area of

Preliminary Plat CD2019-001PLAT by Pebble Creek Rochester, LLC to be known as Pebble Creek Second for development consisting of 18 residential lots on 3.43 acres. The site is located north of 51st Street NW, and west of 61st Ave NW.

City Council Ward: 3 - Campion



This map prepared by the GIS Division, Rochester-Olmsted County Planning Department. Olmsted County is not responsible for omissions or errors contained herein. If discrepancies are found within this map, please notify the GIS Division, Rochester-Olmsted County Planning Department, 2122 Campus Drive SE Rochester MN 55904 (507) 328-7100.

Map Date: 07/16/2019

