



Proposed Silver Lake Improvement Projects

Share Your Feedback

Visit www.polco.us/Rochestermn to provide your input on the various projects presented at the Open House.

Sediment Removal & Dam Modifications

Sediment Removal

- Dredging of Silver Lake is required as part of the flood control maintenance.
- The dredging helps maintain the hydraulic profile of the channel and the effectiveness of the flood control system.
- Approximately 200,000 Cubic Yards of material will be removed and placed at a reservoir site west of Rochester.
- The materials have been tested and no contamination has been revealed.
- The project is currently scheduled for 2020 or 2021. Timing is dependent upon which improvements, if any, are included in the project.

Dam Modifications

- The original dam was built in 1937 and no longer serves the original purpose.
- The proposed modification would lessen the risk of dam failure and remove the spillway drowning hazard.
- The proposed modifications will connect the lake to downstream habitats, allowing fish and other aquatic animals to freely move about the waterway.
- Modifying the dam will allow other uses such as canoeing and kayaking.
- There is not a concern that the modification will have minimal impacts on the 100-year flood levels downstream or upstream of the existing dam location.
- Silver Lake will remain in place upstream of the dam modification. Approximately 400 feet of lake will be modified into a channel of cascading pools.

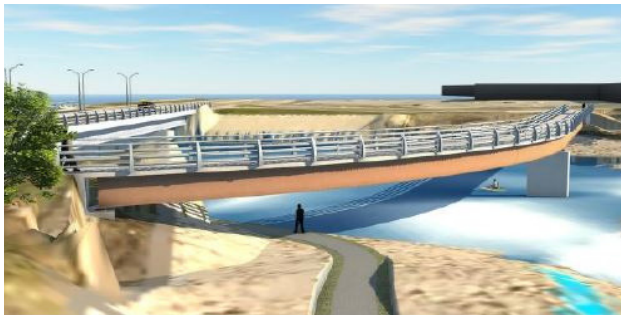


Silver Lake Dam Modification Concept

Silver Lake Park Improvements

Pedestrian Bridge

- The current pedestrian crossing at Broadway Avenue varies from 6 feet wide to 8 feet wide. The ideal width for shared pedestrian and bicycle facilities on bridges is 12 feet.
- Significant work will need to be done to the existing bridge to provide adequate path facilities.
- Pedestrian bridge options can be installed with or without the dam modifications, but dam modifications will allow trail improvements and embankments preparations for the future installation of a pedestrian bridge.
- **Option 1** is a steel plate girder bridge. This style will allow curves to be added to the bridge and can be conventionally fabricated and erected. Estimated cost is \$1.99 million.
- **Option 2** is a hybrid truss bridge and would need to be straight bridge. The truss style would allow other components, such as an arch or cable-stay system to enhance aesthetics. Estimated cost is \$2.62 million.



Pedestrian Bridge Option 1



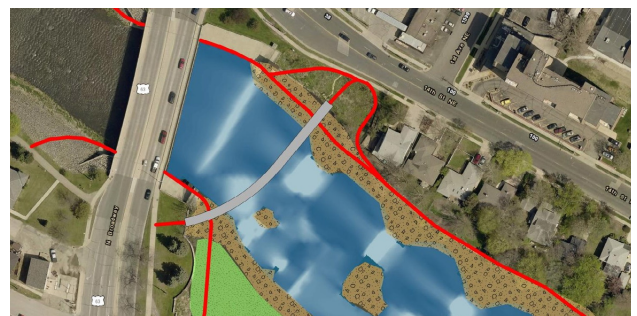
Pedestrian Bridge Option 2

North Side Pedestrian Trail

- The trail on the north side of Silver Lake was included in the 2016 Park Master Plan to address a gap in the trail network.
- The city currently owns property above the current Silver Lake water elevation to construct the majority of the trail.
- The proposed dam modifications would allow the trail to be constructed at a lower elevation closer to the water, which places it further away from the abutting properties.



North side pedestrian trail with existing dam



North side pedestrian trail with modified dam