

# City of Rochester

A VIBRANT, COMPASSIONATE, INNOVATIVE TEAM.



## City Team

### Leadership Forum (All Department Heads and Key Area Leaders)

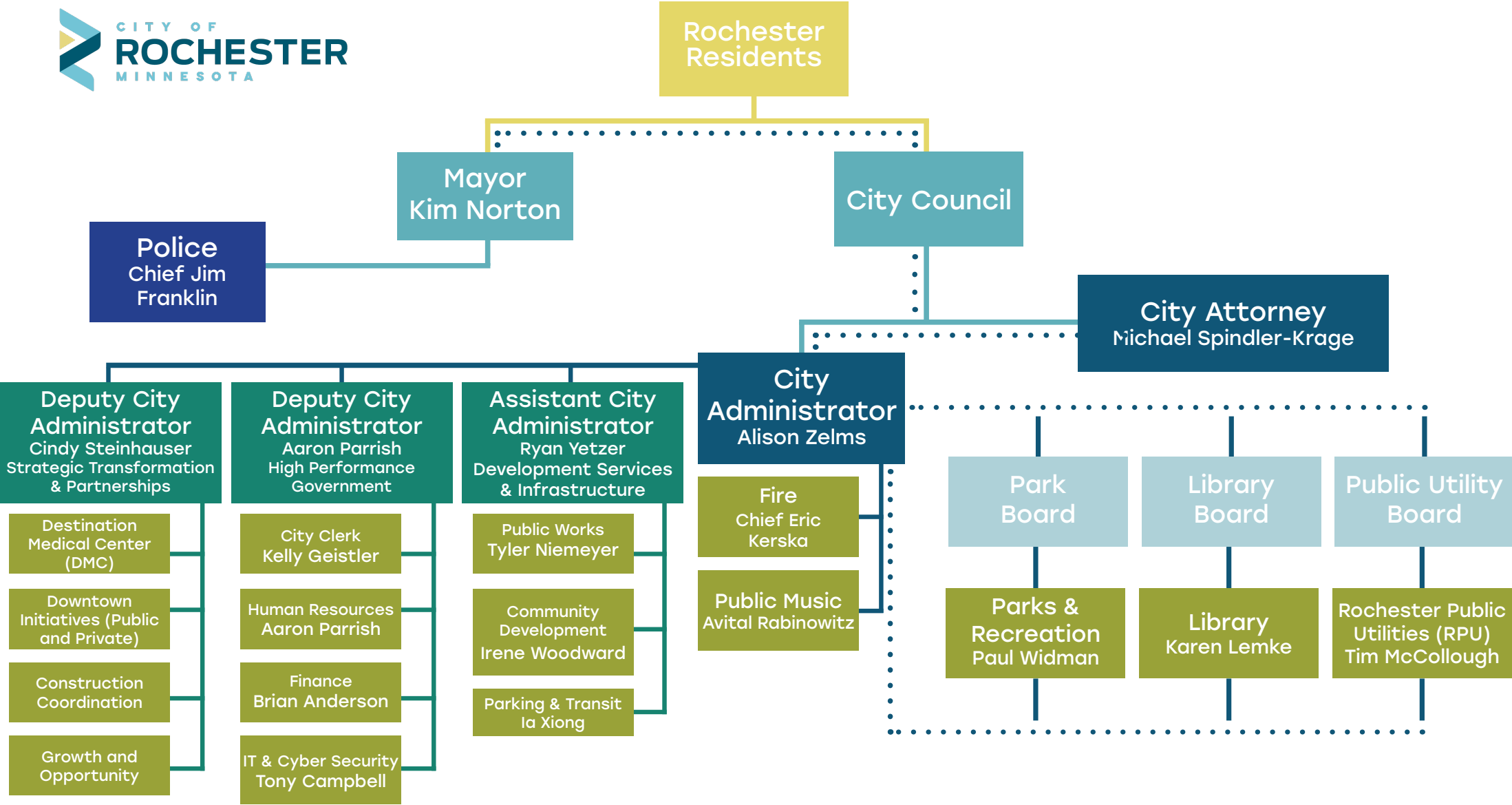
#### Forward Team

- Alison Zelms, City Administrator
- Aaron Parrish, Deputy City Administrator - High Performance Government
- Cindy Steinhauser, Deputy City Administrator - Strategic Transformation & Partnerships
- Ryan Yetzer, Assistant City Administrator - Development Services & Infrastructure
- Michael Spindler-Krage, City Attorney
- Paul Widman, Parks & Recreation Director
- Tim McCollough, RPU General Manager

#### City Administrator

# City of Rochester

A VIBRANT, COMPASSIONATE, INNOVATIVE TEAM.



# City of Rochester

A VIBRANT, COMPASSIONATE, INNOVATIVE TEAM.



## Forward Team



## Impact Teams



## Leadership Forum

### Mission

- Vision
- Strategy
- Direction
- Support: make others successful and achieve their full potential
- Organizational health and culture (focus on people)

- Align around common objectives
- Create team cohesion around service areas
- Implement initiatives and strategic service delivery
- Clarify, communicate, share collective goals and clarify needs with the Forward Team

- Focus on:
- Organizational communication
  - Learning together
  - Trusted leadership relationships
  - Organizational unity

### Who

City Administrator and representatives of each standing Impact Team

- Community Enrichment (Parks, Library, Public Music & Communications, Engagement & 311, Diversity, Equity & Inclusion (DEI))
- DSI (PW, Transit & Parking & Community Development)
- Public Safety (City Attorney, Fire & Police, Emergency Management)
- HPG (City Clerk, Finance, IT & HR)
- Strategic Transformation & Partnership Impact Team (DMC PMs, SID, Dir of Construction)
- Public Service - RPU (Water, Electric, Customer Care)

All department heads and other key leaders

### Frequency of Connection

Weekly connect and monthly strategy session

Weekly Impact Team meetings for Standing Teams

Meets monthly

## Current Forward Team

Alison Zelms, Cindy Steinhauser, Aaron Parrish, Ryan Yetzer, Tim McCollough, Paul Widman, Michael Spindler-Krage

# Departmental Information

*If you are submitting a question to a City teammate, please include the Department Head, Deputy City Administrator(s) and City Administrator.*



Alison Zelms, City Administrator | [azelms@rochestermn.gov](mailto:azelms@rochestermn.gov) | office: 507-328-2004

## Strategic Transformation & Partnerships



Cindy Steinhauser, Deputy City Administrator  
[csteinhauser@rochestermn.gov](mailto:csteinhauser@rochestermn.gov)  
office: 507-328-2015

Strategic Initiatives Director  
Josh Johnsen | [jjohnsen@rochestermn.gov](mailto:jjohnsen@rochestermn.gov)

Director of Construction  
Steve Sampson-Brown

Active Transportation Coordinator  
Matt Tse | [mtse@rochestermn.gov](mailto:mtse@rochestermn.gov)

## Development Services & Infrastructure



Ryan Yetzer, Assistant City Administrator  
[ryetzer@rochestermn.gov](mailto:ryetzer@rochestermn.gov)  
office: 507-328-2954

### PUBLIC WORKS



Tyler Niemeyer, Director  
[tniemeyer@rochestermn.gov](mailto:tniemeyer@rochestermn.gov)  
office: 507-328-2422

### TRANSIT & PARKING



Ia Xiong, Director  
[ixiong@rochestermn.gov](mailto:ixiong@rochestermn.gov)  
office: 507-328-2458

### COMMUNITY DEVELOPMENT



Irene Woodward, Director  
[iwoodward@rochestermn.gov](mailto:iwoodward@rochestermn.gov)  
office: 507-328-2017

Comprehensive Plan, Planning & Zoning  
Ed Caples | [ecaples@rochestermn.gov](mailto:ecaples@rochestermn.gov)

Active City Construction Projects Sidewalk Repair, Snow and Sidewalk Complaints  
Amy Kreofsky | [akreofsky@rochestermn.gov](mailto:akreofsky@rochestermn.gov)

Add a stop sign, traffic light, traffic calming, traffic signals, & metered parking  
Sam Budzyna | [sbudzyna@rochestermn.gov](mailto:sbudzyna@rochestermn.gov)

Public & Seasonal Parking  
Noloan Schild | [NSchild@rochestermn.gov](mailto:NSchild@rochestermn.gov)

## High Performance Government



Aaron Parrish, Deputy City Administrator  
[aparrish@rochestermn.gov](mailto:aparrish@rochestermn.gov)  
office: 507-328-2006

### HUMAN RESOURCES

Aaron Parrish, Director  
[aparrish@rochestermn.gov](mailto:aparrish@rochestermn.gov)  
office: 507-328-2006



### CITY CLERK

Kelly Geistler, City Clerk  
[kgeistler@rochestermn.gov](mailto:kgeistler@rochestermn.gov)  
office: 507-328-2905



### FINANCE

Brian Anderson, Director  
[banderson@rochestermn.gov](mailto:banderson@rochestermn.gov)  
office: 507-328-2861



### IT

Tony Campbell, Director  
[tcampbell@rochestermn.gov](mailto:tcampbell@rochestermn.gov)  
office: 507-328-2848

Licenses and Records & Data Practices Requests  
Christiaan Cartwright | [ccartwright@rochestermn.gov](mailto:ccartwright@rochestermn.gov)

Legislative/Policy Analysis  
Heather Corcoran | [hcorcoran@rochestermn.gov](mailto:hcorcoran@rochestermn.gov)

Facility Management  
Zack Wood | [zwood@rochestermn.gov](mailto:zwood@rochestermn.gov)



## Public Safety



### CITY ATTORNEY

Michael Spindler-Krage, City Attorney  
mskrag@rochestermn.gov  
office: 507-328-2106



### EMERGENCY MANAGEMENT

Captain Jon Turk, Director  
jturk@rochestermn.gov  
office: 507-328-2744



### FIRE

Chief Eric Kerska  
ekerska@rochestermn.gov  
office: 507-328-2800



### POLICE

Chief Jim Franklin  
jfranklin@rochestermn.gov  
office: 507-328-6902  
*\*include Mayor Norton on all correspondence*

## Office of the Mayor



Mayor Kim Norton  
knorton@rochestermn.gov  
office: 507-328-2700



Michon Rogers, Executive Assistant  
mrogers@rochestermn.gov | 507-328-2700

## Public Service



### ROCHESTER PUBLIC UTILITIES (RPU)

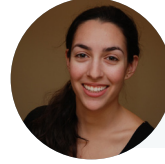
Tim McCollough, General Manager  
tmccollough@rpu.org  
office: 507-280-1601

## Community Enrichment



### PARKS & RECREATION

Paul Widman, Director  
pwidman@rochestermn.gov  
office: 507-328-2527



### PUBLIC MUSIC – RIVERSIDE CONCERTS

Avital Rabinowitz, Director of Civic Music  
arabinowitz@rochestermn.gov  
office: 507-328-2201



### DIVERSITY, EQUITY & INCLUSION

Chao Mwatela, Diversity, Equity & Inclusion Director  
cmwatela@rochestermn.gov  
office: 507-328-2030



### LIBRARY

Karen Lemke, Director  
klemke@rplmn.org  
office: 507-328-2343



### COMMUNICATIONS & ENGAGEMENT, 311

Jenna Bowman, Strategic Communications & Engagement Director  
jbowman@rochestermn.gov  
office: 507-328-2913

311  
Jorge Llinas | jllinas@rochestermn.gov

Parks and Trails  
Forestry  
Mike Nigbur | mnigbur@rochestermn.gov

Recreation Facilities  
Ben Boldt | bboldt@rochestermn.gov

AccessABLE Recreation  
Sue Miller | smiller1@rochestermn.gov



*If you are submitting a question to a City teammate, please include the Department Head, Deputy City Administrator(s) and City Administrator.*